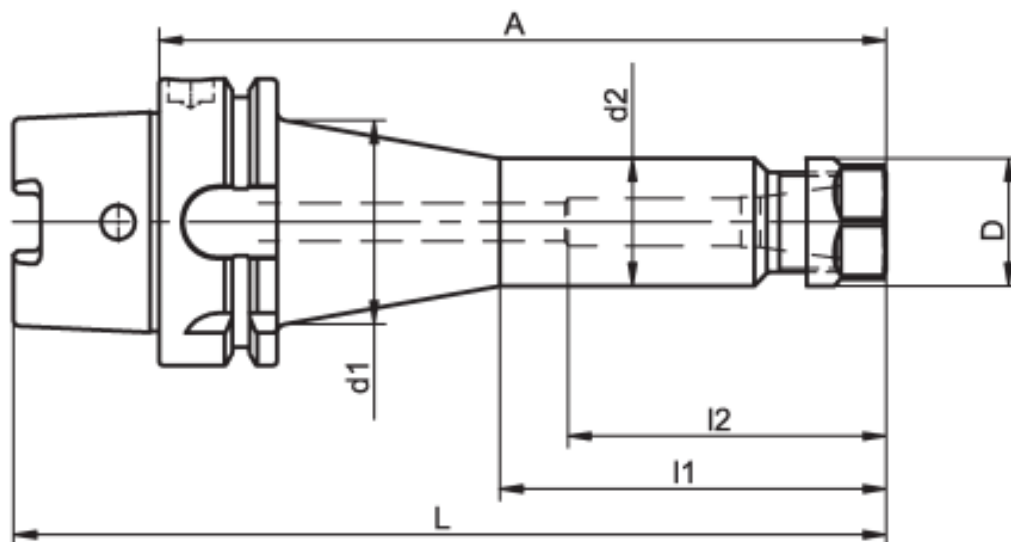


similar to DIN 69 882-6

Rev. 12-1101 Page 1 of 1
Uncontrolled Document**Use**

For clamping tools with straight shank according to DIN 6499 type A and B.

Design

Permissible concentricity deviation of hollow taper shank to inner taper 0.003 mm. Chucks are fine balanced without clamping nut according to ISO 1940-1 G 2.5 at 25,000 rpm. Clamping nut balanced according to ISO 1940-1 G 2.5 at 25,000 rpm.

Standard Specification

Collet chuck including clamping nut.

Note

Chip passage drilled out. Other designs and sizes are available on request.

Available for HSK-A 40, 50, 63, 100