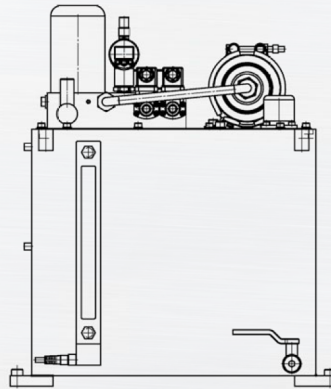
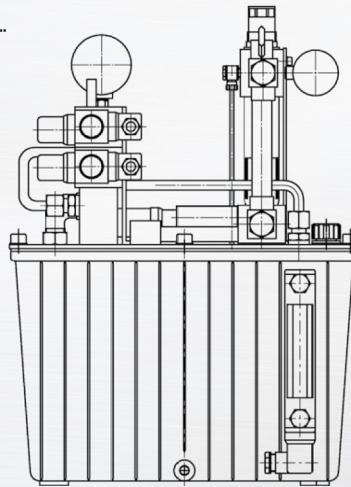


Hydraulikaggregat HA...
Hydraulic power station HA...



Lufthydraulikaggregat HAL...
Air-hydraulic power station HAL...



Application

Hydraulic power stations for quick die clamping systems are designed for actuating hydraulic clamping elements in the forming presses. A large number of electro-hydraulic (HA) or air-hydraulic power stations (HAL) are available depending on the use of the clamping elements and/or hydraulics on the press plunger or on the table, as well as the number of clamping elements.

Design Features

The BERG electro-hydraulic units are always constructed as accumulator charging circuits and operate in intermittent operation with electronic pressure monitoring accordingly. Only the most high quality components are used. A differentiation is made between compact and add-on groups with a sub-oil pump depending on the necessary delivery volume. A hydraulic power station especially configured to meet the requirements of the clamping technology is used as an air hydraulic power station. The group operates independently, i.e. no pump control system is necessary.

Accessories/Services

All necessary components and systems such as configured connection hoses, oil sumps, control cabinet or the control station are available as accessories. As a service BERG offers the development and construction of complete hydraulic systems for retrofitting and customization.