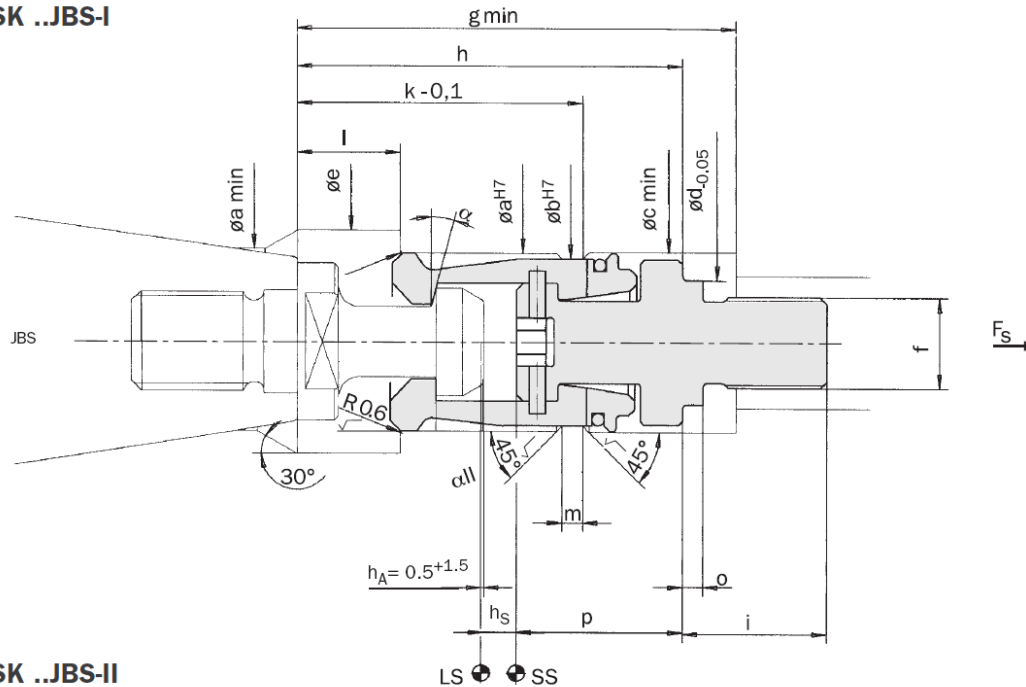




SSK ..JBS-I



SSK ..JBS-II

## Application

SSK gripper are primarily designed for drawing in and ejecting steep taper tooling provided with retention knobs internationally standardized as per DIN, ANSI, MAS, JIS and ISO which allow fast automatic tool changes. SSK grippers are not only suitable for clamping tools, but also workpieces or workpiece holders and pallets on machining centers, milling machines, boring machines, grinding centers, special purpose machines, and handling systems.

Grippers in special designs are available for other shapes in addition to the types for standardized clamping bolts. Actuation is mechanical, hydraulic, electro-mechanical or pneumatic.

## Design Features

SSK gripper comprise four clamping segments which are captively connected to the draw bolt to ensure easy assembly. They transfer the clamping force positively from the draw bolt to the retention knob.

It is possible to clamp tool shanks of the same steep taper with retention knobs of different standards using different gripper in a uniformly designed spindle. Refer to the following table detailing the assignments.

The version SSKS.. was developed for very high spindle rotational speeds. Their external design is identical to that of the SSK version of the same type. Gripper of the series SSK..JBS I(II) are always designed for the high-speed version.

In comparison to the very high clamping forces of the SSK and SSKE series, the SSKE·KH series are designed in favour of a considerably shorter axial stroke according to the generally common values.