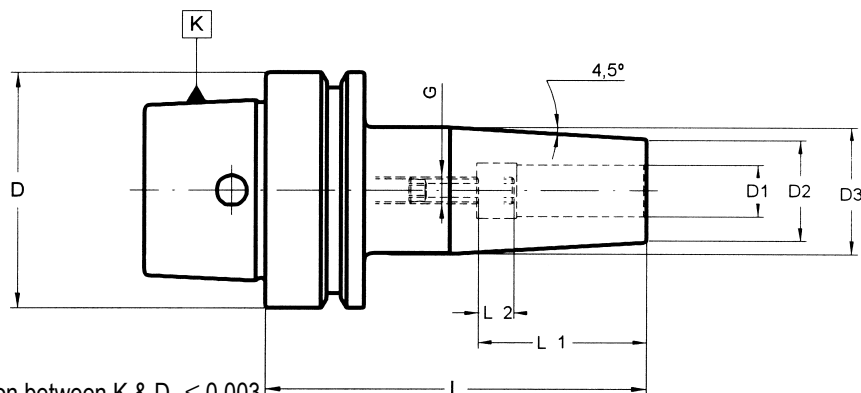


# 012 18 12 .. ..

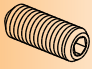
## SHRINK FIT CHUCKS (STANDARD LENGTH)



DIN 69882-8



Maximum circular deviation between K & D<sub>1</sub> ≤ 0,003

D HSK-E	D <sub>1</sub>	D <sub>2</sub>	D <sub>3</sub>	L	L <sub>1</sub>	L <sub>2</sub>	G	COD.	€	
25	3	8	16	60	20	-	-	012 18 12 10 03	-	-
25	4	9	17	60	20	-	-	012 18 12 10 04	-	-
25	5	10	18	60	25	-	-	012 18 12 10 05	-	-
25	6	12	20	70	36	10	M-5	012 18 12 10 06	-	301 02 33 05 02
25	8	14	20	70	36	10	M-6	012 18 12 10 08	-	301 02 33 06 02
25	10	16	20	70	41	10	M-8	012 18 12 10 10	-	301 02 33 08 02
32	3	12	18	60	20	5	M-5	012 18 12 11 03	-	301 02 33 05 12
32	4	14	20	60	20	5	M-5	012 18 12 11 04	-	301 02 33 05 22
32	5	16	22	60	25	5	M-5	012 18 12 11 05	-	301 02 33 05 32
32	6	21	26	70	36	10	M-5	012 18 12 11 06	-	301 02 33 05 02
32	8	21	26	70	36	10	M-6	012 18 12 11 08	-	301 02 33 06 02
32	10	24	29	75	41	10	M-8	012 18 12 11 10	-	301 02 33 08 02
32	12	24	29	80	46	10	M-10	012 18 12 11 12	-	301 02 33 10 02
40	6	21	27	80	36	10	M-5	012 18 12 12 06	-	301 02 33 05 02
40	8	21	27	80	36	10	M-6	012 18 12 12 08	-	301 02 33 06 02
40	10	24	32	80	41	10	M-8	012 18 12 12 10	-	301 02 33 08 02
40	12	24	32	90	46	10	M-10	012 18 12 12 12	-	301 02 33 10 02
40	14	27	34	90	46	10	M-10	012 18 12 12 14	-	301 02 33 10 02
40	16	27	34	90	49	10	M-12	012 18 12 12 16	-	301 02 33 12 02
50	6	21	27	80	36	10	M-5	012 18 12 13 06	-	301 02 33 05 02
50	8	21	27	80	36	10	M-6	012 18 12 13 08	-	301 02 33 06 02
50	10	24	32	85	41	10	M-8	012 18 12 13 10	-	301 02 33 08 02
50	12	24	32	90	46	10	M-10	012 18 12 13 12	-	301 02 33 10 02
50	14	27	34	90	46	10	M-10	012 18 12 13 14	-	301 02 33 10 02
50	16	27	34	95	49	10	M-12	012 18 12 13 16	-	301 02 33 12 02
50	18	33	42	95	49	10	M-12	012 18 12 13 18	-	301 02 33 12 02
50	20	33	42	100	51	10	M-12	012 18 12 13 20	-	301 02 33 16 02
63	3	12	18	80	20	5	M-5	012 18 12 14 03	-	301 02 33 05 12
63	4	14	20	80	20	5	M-5	012 18 12 14 04	-	301 02 33 05 22
63	5	16	22	80	25	5	M-5	012 18 12 14 05	-	301 02 33 05 32
63	6	21	27	80	36	10	M-5	012 18 12 14 06	-	301 02 33 05 02
63	8	21	27	80	36	10	M-6	012 18 12 14 08	-	301 02 33 06 02
63	10	24	32	85	41	10	M-8	012 18 12 14 10	-	301 02 33 08 02
63	12	24	32	90	46	10	M-10	012 18 12 14 12	-	301 02 33 10 02
63	14	27	34	90	46	10	M-10	012 18 12 14 14	-	301 02 33 10 02
63	16	27	34	95	49	10	M-12	012 18 12 14 16	-	301 02 33 12 02
63	18	33	42	95	49	10	M-12	012 18 12 14 18	-	301 02 33 12 02
63	20	33	42	100	51	10	M-16	012 18 12 14 20	-	301 02 33 12 02
63	25	44	53	115	57	10	M-16	012 18 12 14 25	-	301 02 33 12 02
63	32	44	53	120	61	10	M-16	012 18 12 14 32	-	301 02 33 12 02

### Design:

For Carbide, Cermet and HSS tool shanks according to DIN 6535 form HA and DIN 1835-1 form A  
For tool shank tolerance of h4 for D > 6 mm. and h6 for D 6 mm.

### Performance:

Balanced according to ISO 1940-1 to **25.000 r.p.m. G 2.5** . Under request, able to balance up to 50.000 r.p.m.

### Delivery:

With built-in bored through stop screw.