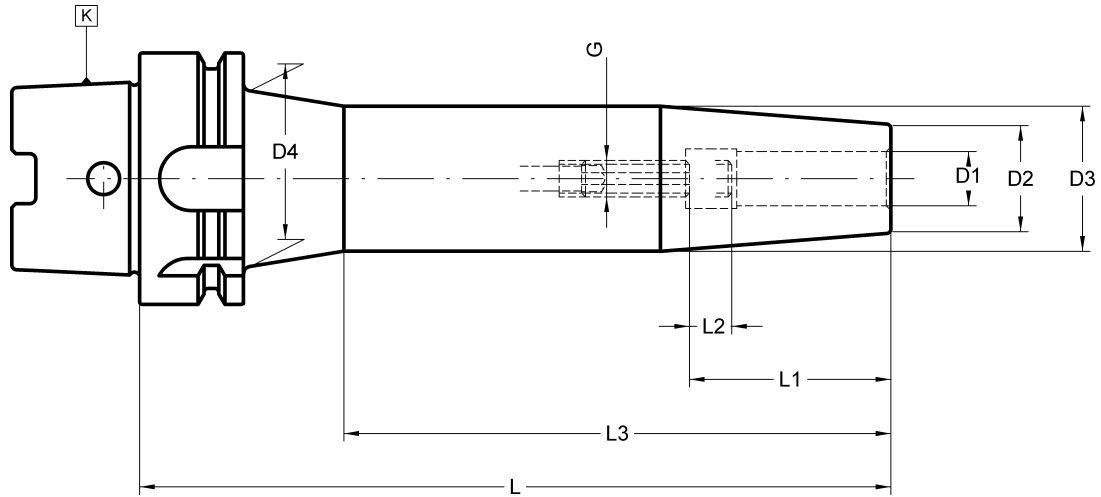


012 14 12 ...

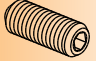
SHRINK FIT CHUCKS (EXTRA LARGE LENGTH)



DIN 69882-8



Maximum circular deviation between K & D₁ ≤ 0,003

D HSK-A	D ₁	D ₂	D ₃	D ₄	L	L ₁	L ₂	L ₃	G	COD.	€	
100	6	21	27	41	200	36	10	140	M-5	012 14 12 44 06	-	301 02 33 05 02
100	8	21	27	41	200	36	10	140	M-6	012 14 12 44 08	-	301 02 33 06 02
100	10	24	32	43	200	41	10	140	M-8	012 14 12 44 10	-	301 02 33 08 02
100	12	24	32	43	200	46	10	140	M-10	012 14 12 44 12	-	301 02 33 10 02
100	14	27	34	51	200	46	10	140	M-10	012 14 12 44 14	-	301 02 33 10 02
100	16	27	34	51	200	49	10	140	M-12	012 14 12 44 16	-	301 02 33 12 02
100	18	33	42	51	200	49	10	140	M-12	012 14 12 44 18	-	301 02 33 12 02
100	20	33	42	51	200	51	10	140	M-16	012 14 12 44 20	-	301 02 33 16 02

Design:

For Carbide, Cermet and HSS tool shanks according to DIN 6535 form HA and DIN 1835-1 form A
For tool shank tolerance of h4 for D > 6 mm. and h6 for D ≤ 6 mm.

Performance:

Balanced according to ISO 1940-1 to **25.000 r.p.m. G 2.5**. Under request, able to balance up to 50.000 r.p.m.

Delivery:

With built-in bored through stop screw.