

012 14 01

WELDON HOLDERS

For end mills with shank DIN 1835-B - DIN 6535 HB



ALTERNATIVE SOLUTION 003 14 54 + 012 54 04

DIN 69882-5

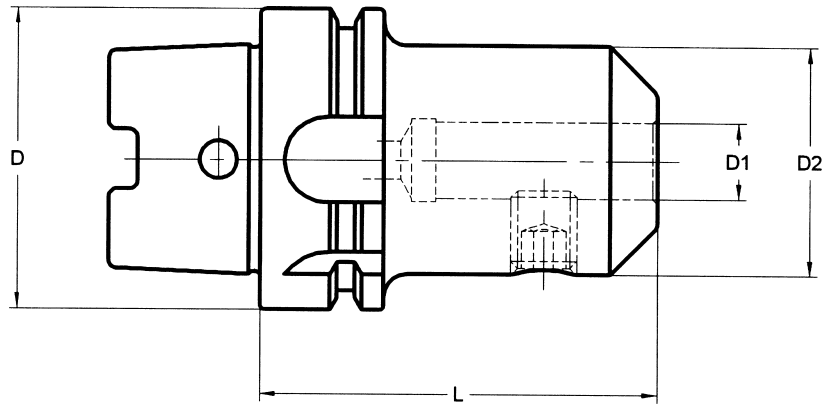
* The hole diameter and circular deviation tolerances have been significantly tightened up compared with DIN 1835 in order to achieve the highest levels of machining precision.

Coolant tube to be ordered separately.

Balanced according to ISO 1940-1 up to 10.000 R.p.m.
We have latest methods for dynamic balancing up to 50.000 R.p.m.

$D_1 > 25$ mm: two clamping holes.

* Runout between outer taper and $D_1 \leq 0,003$



D HSK-A	D ₁	* tol.	L	D ₂	COD.	€	
32	6		60	25	012 14 01 11 06		301 01 05 06 10
32	8	+0,005 0	60	28	012 14 01 11 08		301 01 05 08 10
32	10		65	35	012 14 01 11 10		301 01 05 10 12
40	6		60	25	012 14 01 12 06		301 01 05 06 10
40	8		60	28	012 14 01 12 08		301 01 05 08 10
40	10	+0,005 0	60	35	012 14 01 12 10		301 01 05 10 12
40	12		70	42	012 14 01 12 12		301 01 05 12 16
40	14		75	44	012 14 01 12 14		301 01 05 12 16
40	16		75	48	012 14 01 12 16		301 01 05 14 16
50	6		65	25	012 14 01 13 06		301 01 05 06 10
50	8		65	28	012 14 01 13 08		301 01 05 08 10
50	10		65	35	012 14 01 13 10		301 01 05 10 12
50	12	+0,005 0	80	42	012 14 01 13 12		301 01 05 12 16
50	14		80	44	012 14 01 13 14		301 01 05 12 16
50	16		80	48	012 14 01 13 16		301 01 05 14 16
50	18		80	50	012 14 01 13 18		301 01 05 14 16
50	20	+0,007	80	52	012 14 01 13 20		301 01 05 16 16
63	6		65	25	012 14 01 14 06		301 01 05 06 10
63	8		65	28	012 14 01 14 08		301 01 05 08 10
63	10	+0,005 0	65	35	012 14 01 14 10		301 01 05 10 12
63	12		80	42	012 14 01 14 12		301 01 05 12 16
63	14		80	44	012 14 01 14 14		301 01 05 12 16
63	16		80	48	012 14 01 14 16		301 01 05 14 16
63	18		80	50	012 14 01 14 18		301 01 05 14 16
63	20		80	52	012 14 01 14 20		301 01 05 16 16
63	25	+0,007 0	110	65	012 14 01 14 25		301 01 05 18 20
63	32		110	72	012 14 01 14 32		301 01 05 20 20
80	6		80	25	012 14 01 15 06		301 01 05 06 10
80	8		80	28	012 14 01 15 08		301 01 05 08 10
80	10	+0,005 0	80	35	012 14 01 15 10		301 01 05 10 12
80	12		80	42	012 14 01 15 12		301 01 05 12 16
80	14		80	44	012 14 01 15 14		301 01 05 12 16
80	16		100	48	012 14 01 15 16		301 01 05 14 16
80	18		100	50	012 14 01 15 18		301 01 05 14 16
80	20		100	52	012 14 01 15 20		301 01 05 16 16
80	25	+0,007 0	100	65	012 14 01 15 25		301 01 05 18 20
80	32		110	72	012 14 01 15 32		301 01 05 20 20
80	40	+0,009 0	120	80	012 14 01 15 40	▼	301 01 05 20 20
100	6		80	25	012 14 01 16 06		301 01 05 06 10
100	8		80	28	012 14 01 16 08		301 01 05 08 10
100	10	+0,005 0	80	35	012 14 01 16 10		301 01 05 10 12
100	12		80	42	012 14 01 16 12		301 01 05 12 16
100	14		80	44	012 14 01 16 14		301 01 05 12 16
100	16		100	48	012 14 01 16 16		301 01 05 14 16
100	18		100	50	012 14 01 16 18		301 01 05 14 16
100	20		100	52	012 14 01 16 20		301 01 05 16 16
100	25	+0,007 0	100	65	012 14 01 16 25		301 01 05 18 20
100	32		100	72	012 14 01 16 32		301 01 05 20 20
100	40	+0,009 0	110	80	012 14 01 16 40		301 01 05 20 20
100	50		130	98	012 14 01 16 50		301 01 05 24 25

▼ Product outside of our present production program. Price subject to availability.