

004 14 06 (1/2)

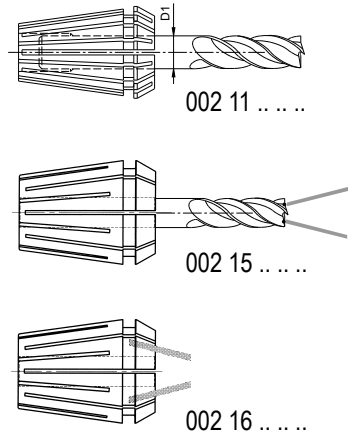
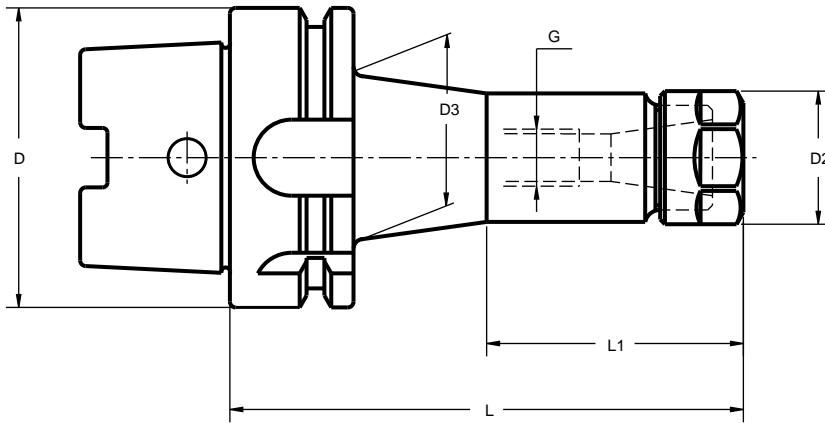
COLLET CHUCKS ER TYPE (DIN 6499)

For tools with cylindrical straight shank DIN 1835-A



ALTERNATIVE SOLUTION 003 14 54 + 004 54 06

DIN 69882-6



Runout between outer taper and collet housing $\leq 0,003$

D HSK-A	SIZE	D ₁	L	D ₂	D ₃	L ₁	G	COD.	€
32	(ER16)	0,5 - 10	80	28	-	-	M-8	004 14 06 01 03	
40	(ER16)	0,5 - 10	80	28	-	-	M-10	004 14 06 02 03	
50	(ER16)	0,5 - 10	100	28	-	-	M-10	004 14 06 03 13	
63	(ER16)	0,5 - 10	80	28	-	-	M-10	004 14 06 04 03	
63	(ER16)	0,5 - 10	100	28	-	-	M-10	004 14 06 04 13	
63	(ER16)	0,5 - 10	160	28	45	85	M-10	004 14 06 04 33	
80	(ER16)	0,5 - 10	100	28	-	-	M-12	004 14 06 05 13	
80	(ER16)	0,5 - 10	160	28	45	85	M-12	004 14 06 05 33	
100	(ER16)	0,5 - 10	100	28	-	-	M-12	004 14 06 06 13	
100	(ER16)	0,5 - 10	160	28	60	85	M-12	004 14 06 06 33	

Balanced according to ISO 1940-1 up to 10.000 R.p.m.

We have latest methods for dynamic balancing up to 50.000 R.p.m.

Coolant tube to be ordered separately.

OPTIONAL

Length adjustment screw with trough hole



D-HSK	Ø of shank 2,8 - 5	Ø of shank 4,8 - 7	Ø of shank 6,8 - 10
32	301 04 14 08 04	301 04 14 08 05	301 04 14 08 06
40	301 04 14 10 01	301 04 14 10 02	301 04 14 10 03
50 63	301 04 14 10 04	301 04 14 10 05	301 04 14 10 06
80 100	301 04 14 12 01	301 04 14 12 02	301 04 14 12 03

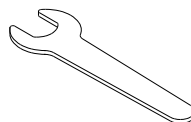
BALANCED
NUT
(STANDARD)



BEARING
NUT
(OPTIONAL)



WRENCH
(OPTIONAL)



SIZE
ER 16

004 99 01 08 03

004 99 01 04 03

004 99 04 06 25

004 14 06 COLLET CHUCKS ER TYPE (DIN 6499)

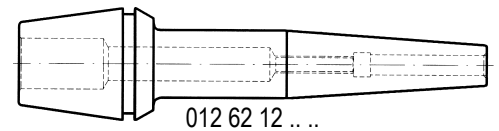
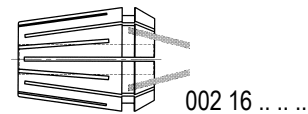
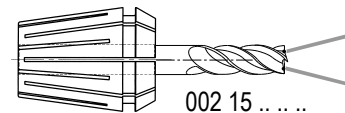
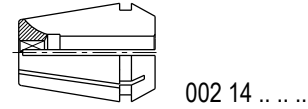
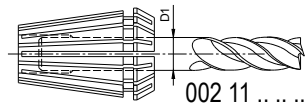
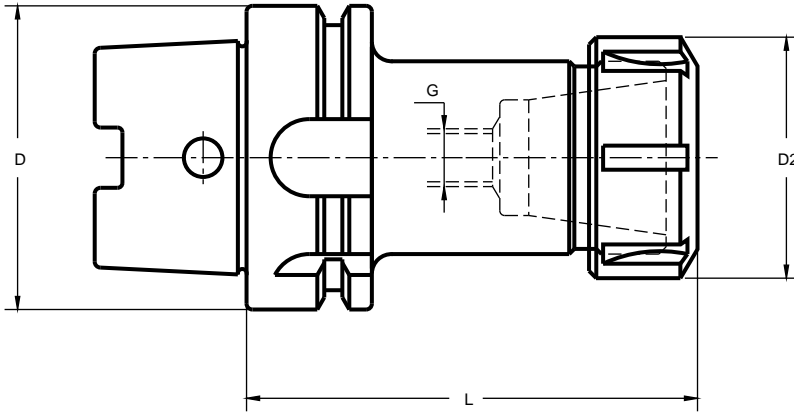
(2/2)



For tools with cylindrical straight shank DIN 1835-A

ALTERNATIVE SOLUTIONS 004 14 05
003 14 54 + 004 54 06

DIN 69882-6



Runout between outer taper and collet housing $\leq 0,003$

D HSK-A	SIZE	D ₁	L	D ₂	G	COD.	€
40	(ER25)	1-16	80	42	M-10	004 14 06 02 05	
40	(ER32)	2-20	100	50	M-16	004 14 06 02 06	
50	(ER25)	1-16	80	42	M-10	004 14 06 03 05	
50	(ER32)	2-20	100	50	M-16	004 14 06 03 06	
63	(ER25)	1-16	80	42	M-10	004 14 06 04 05	
63	(ER32)	2-20	100	50	M-16	004 14 06 04 06	
63	(ER40)	3-26	120	63	M-16	004 14 06 04 07	
80	(ER32)	2-20	100	50	M-16	004 14 06 05 06	
80	(ER40)	3-26	120	63	M-16	004 14 06 05 07	
100	(ER32)	2-20	100	50	M-16	004 14 06 06 06	
100	(ER40)	3-26	120	63	M-16	004 14 06 06 07	

Balanced according to ISO 1940-1 up to 10.000 R.p.m.

We have latest methods for dynamic balancing up to 50.000 R.p.m.

Coolant tube to be ordered separately.

OPTIONAL

D-HSK	SIZE	Length adjustment screw with trough hole				
		Ø of shank 3,8 - 7	Ø of shank 6,8 - 10	Ø of shank 9,8 - 13	Ø of shank 12,8 - 20	Ø of shank 19,8 - 26
40	(ER-25)	301 04 14 10 11	301 04 14 10 12	301 04 14 10 13	—	—
40	(ER-32)	301 04 14 16 01	301 04 14 16 02	301 04 14 16 03	301 04 14 16 04	—
50	(ER-25)	301 04 14 10 11	301 04 14 10 12	301 04 14 10 13	—	—
50	(ER-32)	301 04 14 16 01	301 04 14 16 02	301 04 14 16 03	301 04 14 16 04	—
63	(ER-25)	301 04 14 10 11	301 04 14 10 12	301 04 14 10 13	—	—
63	(ER-32)	301 04 14 16 01	301 04 14 16 02	301 04 14 16 03	301 04 14 16 04	—
63	(ER-40)	301 04 14 16 01	301 04 14 16 02	301 04 14 16 03	301 04 14 16 04	301 04 14 16 05
80	(ER-32)	301 04 14 16 06	301 04 14 16 07	301 04 14 16 08	301 04 14 16 09	—
80	(ER-40)	301 04 14 16 06	301 04 14 16 07	301 04 14 16 08	301 04 14 16 09	301 04 14 16 10
100	(ER-32)	301 04 14 16 06	301 04 14 16 07	301 04 14 16 08	301 04 14 16 09	—
100	(ER-40)	301 04 14 16 06	301 04 14 16 07	301 04 14 16 08	301 04 14 16 09	301 04 14 16 10

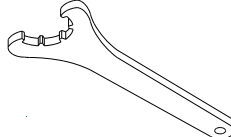
BALANCED
NUT
(STANDARD)



BEARING
NUT
(OPTIONAL)



WRENCH
(OPTIONAL)



SIZE

ER 25	004 99 01 03 05	004 99 01 04 05	004 99 04 03 05
ER 32	004 99 01 03 06	004 99 01 04 06	004 99 04 03 06
ER 40	004 99 01 03 07	004 99 01 04 07	004 99 04 03 07