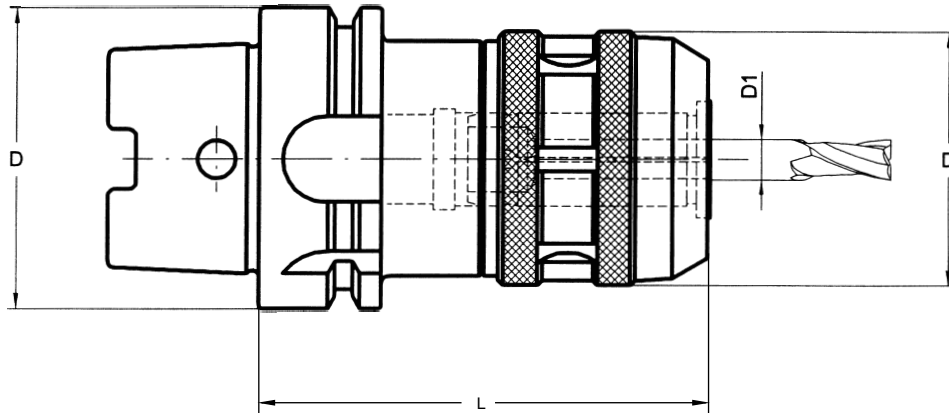




004 14 05 ...

GREAT POWER COLLET CHUCKS

For tools with plain cylindrical straight shank



Runout between outer taper and collet housing $\leq 0,003$

D HSK-A	D ₁ max	L	D	COD.	€		 OPTIONAL
63	20	110	54	004 14 05 04 04		004 99 04 02 06	004 99 04 09 10
63	32	130	72	004 14 05 04 06		004 99 04 02 06	004 99 04 09 12
80	32	135	72	004 14 05 05 06		004 99 04 02 06	004 99 04 09 12
100	32	140	72	004 14 05 06 06		004 99 04 02 06	004 99 04 09 12

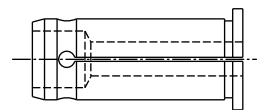
In order to achieve best results we recommend to use cylindrical tools with h6 tolerance.

When tool shank diameter is 'D₁ max.', there is no need of any collet.

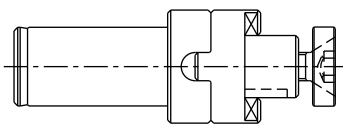
Balanced according to ISO 1940-1 up to 10.000 R.p.m.

We have latest methods for dynamic balancing up to 50.000 R.p.m.

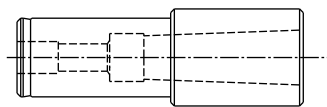
Coolant tube to be ordered separately.



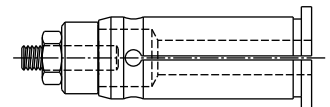
002 05



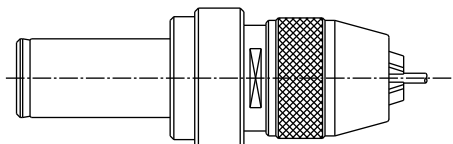
001 50 02 06 ..



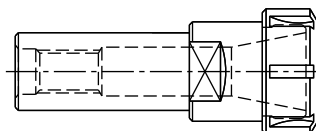
003 50 12 06 ..



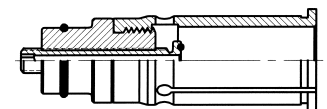
002 07



012 50 09



004 50 06



002 09