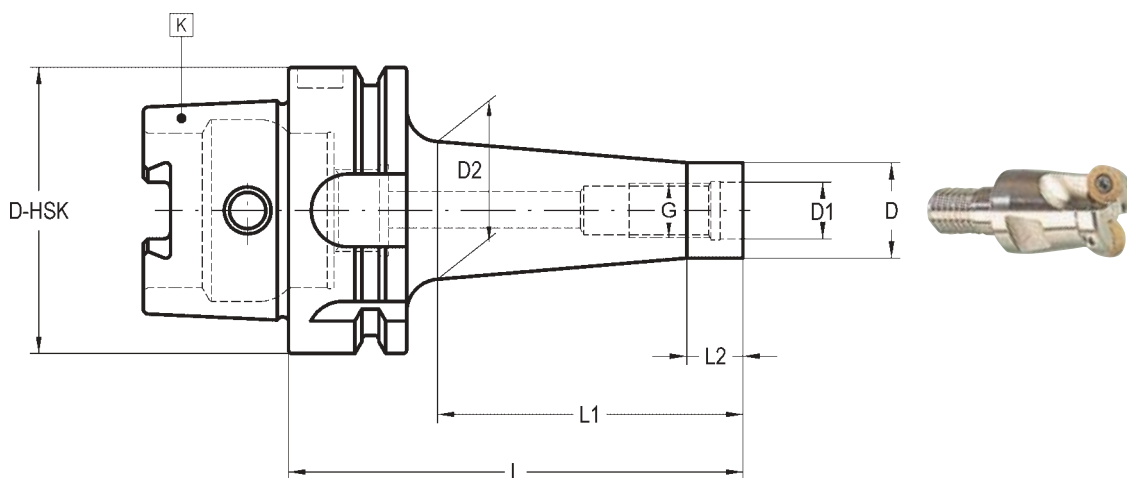


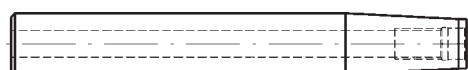
003 14 57

FRONT CONTACT ADAPTERS FOR SCREW IN-TOOLS

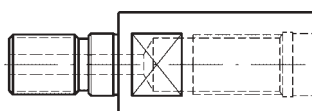


Runout between K and D₁ ≤ 0,003

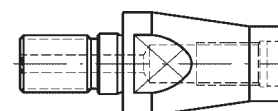
D HSK-A	G	D	D ₁	D ₂	L	L ₁	L ₂	COD.	€
40	M-6	9,8	6,5	12	50	25	10	003 14 57 12 01	
40	M-6	9,8	6,5	20	100	75	10	003 14 57 32 01	
40	M-8	12,8	8,5	16	50	25	10	003 14 57 12 02	
40	M-8	12,8	8,5	24	100	75	10	003 14 57 32 02	
50	M-8	12,8	8,5	16	55	25	10	003 14 57 13 02	
50	M-8	12,8	8,5	24	105	75	10	003 14 57 33 02	
50	M-10	17,8	10,5	20	55	25	10	003 14 57 13 03	
50	M-10	17,8	10,5	28	105	75	10	003 14 57 33 03	
63	M-8	12,8	8,5	16	55	25	10	003 14 57 14 02	
63	M-8	12,8	8,5	24	105	75	10	003 14 57 34 02	
63	M-10	17,8	10,5	20	55	25	10	003 14 57 14 03	
63	M-10	17,8	10,5	28	105	75	10	003 14 57 34 03	
63	M-12	20,8	12,5	24	55	25	10	003 14 57 14 04	
63	M-12	20,8	12,5	32	105	75	10	003 14 57 34 04	
63	M-16	28,8	17	30	55	25	10	003 14 57 14 05	
63	M-16	28,8	17	38	105	75	10	003 14 57 34 05	
100	M-12	20,8	12,5	24	90	50	10	003 14 57 26 04	
100	M-12	20,8	12,5	34	140	100	10	003 14 57 46 04	
100	M-16	28,8	17	32	90	50	10	003 14 57 26 05	
100	M-16	28,8	17	42	140	100	10	003 14 57 46 05	



Cylindrical extensions



Extensions



Reducers

Delivery:

- Balanced according to ISO 1940-1 up to 15.000 R.p.m.
- We have latest methods for dynamic balancing up to 50.000 R.p.m.
- Coolant tube to be ordered separately.