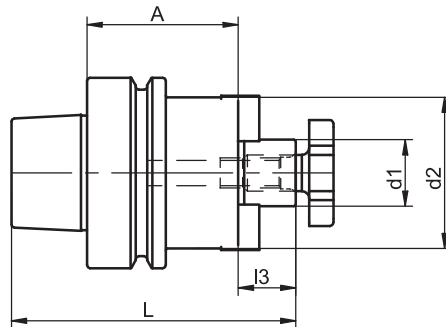


Shell End Mill Arbors with Enlarged Contact Diameter

DIN 69 882-3



HSK-F	d1	A	Ref.no.	d2	l3	L	kg
63	16	50	579.0001.371	32	17	92	0.9
63	22	50	579.0002.371	40	19	94	1.1

For coolant tubes see accessories page 4.8

For further accessories such as cutter retaining screws, keys or drive keys see accessories from page 4.12 to page 4.14

Use

For clamping shell end mills and milling cutters with longitudinal slot or tenon drive.

Standard Specification

Cutter retaining screw and tightened drive keys included.

Design

Permissible concentricity deviation of hollow taper shank to arbor $d1 = 0.006$ mm.
Central boring for coolant supply.

Note

Other designs and sizes are available on request.

TAC Rockford - Tel. 815 962-4500 - info@TACRockford.com - www.TACRockford.com