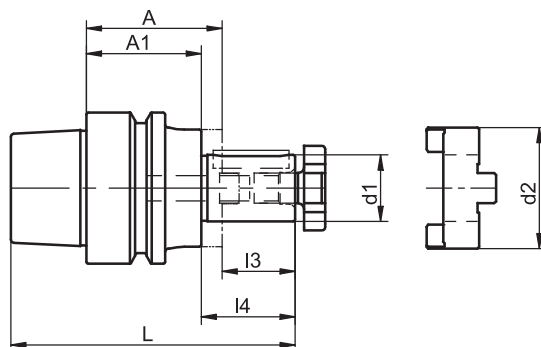


## Shell End Mill Arbors for Milling Cutters with Longitudinal Slot or Tenon Drive

similar to DIN 69 882-2



HSK-E	d1	A	Ref.no.	d2	l3	l4	L	A1	kg
50	16	50	<b>489.0001.363</b>	32	17	27	92	40	0.7
50	22	50	<b>489.0002.363</b>	40	19	31	94	38	0.8
50	27	65	<b>489.0003.363</b>	48	21	33	111	53	1.0
50	32	65	<b>489.0004.363</b>	58	24	38	114	51	1.2

For coolant tubes see accessories page 4.8

For further accessories such as cutter retaining screws, keys, feather keys or drive rings see accessories from page 4.12 to page 4.13

### Use

For clamping shell end mills and milling cutters with longitudinal slot or tenon drive.

### Standard Specification

Cutter retaining screw, feather key with withdrawal thread and drive ring included.

### Design

Permissible concentricity deviation of hollow taper shank to arbor  $d1 = 0.006$  mm.  
Cutter drive according to DIN 138.

### Note

Other designs and sizes are available on request.

**TAC Rockford - Tel. 815 962-4500 - info@TACRockford.com - www.TACRockford.com**