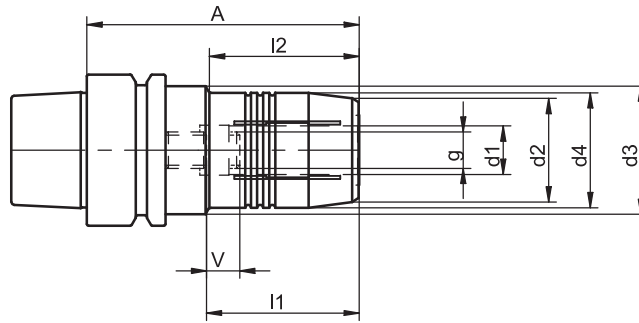


Hydraulic Expansion Chucks

similar to DIN 69 882-7



HSK-E	d1	A	Ref.no.	d2	d3	d4	l1	l2	g	V	kg
40	6	70	702.0001.362	22	34	26	37.5	36.5	M 5	10	0.6
40	8	70	702.0002.362	24	34	28	37.5	37.5	M 6	10	0.6
40	10	75	702.0003.362	26	34	30	42.5	42.5	M 8 x 1	10	0.6
40	12	80	702.0004.362	28	34	32	47.5	47.5	M10 x 1	10	0.6
50	6	70	702.0001.363	22	40	26	37.5	26.5	M 5	10	0.8
50	8	70	702.0002.363	24	40	28	37.5	27.5	M 6	10	0.8
50	10	75	702.0003.363	26	40	30	42.5	32.5	M 8 x 1	10	0.8
50	12	80	702.0004.363	28	40	32	47.5	43.5	M10 x 1	10	0.8
50	16	90	702.0006.363	34	53	40	52.5	29.5	M12 x 1	10	1.1
50	20	90	702.0008.363	38	60	42	52.5	29.5	M16 x 1	10	1.1

For coolant tubes see accessories page 4.8

For adjusting screws see accessories page 4.11

For reduction bushes see accessories page 4.11

Use

For shank tools according to DIN 1835 type A and B or DIN 6535 type HA and HB.

Shanks according to DIN 6535 type HE are only applicable with reduction bushes.

Shank quality h6, Ra min = 0.3.

Design

Chucks are fine balanced according to ISO 1940-1 G 6.3 at 12,000 min⁻¹.

Standard Specification

Bored-through adjusting screw included.

Note

Other designs and sizes are available on request.