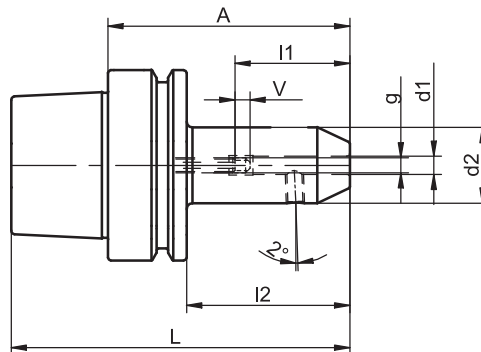


Reduction Sleeves for Straight Shanks with Inclined Clamping Surface (Whistle Notch)

similar to DIN 69 882-5



HSK-E	d1	A	Ref.no.	d2	l1	l2	g	L	d1 tolerance	V	kg
63	10	80	420.0153.364	35	41	54	M 8	112	+ 0.005	10	1.0
63	12	90	420.0154.364	42	47	64	M10	122	+ 0.005	10	1.3
63	16	100	420.0156.364	48	50	74	M12	132	+ 0.005	10	1.6
63	25	110	420.0159.364	65	58	84	M20	142	+ 0.007	10	2.2

For coolant tubes see accessories page 4.8

For clamping screws see accessories page 4.12

For adjusting screws see accessories page 4.9

Use

For holding shank tools with inclined clamping surface (2°),
DIN 1835 type E and DIN 6535 type HE.

Design

Permissible concentricity deviation of hollow taper shank to location hole d1 = 0.003 mm.

Chucks are fine balanced according to ISO 1940-1 G 6.3 at 12,000 min⁻¹.

Standard Specification

Clamping screw and adjusting screw included.
From location hole d1 = 25 mm 2 clamping screws are included.

Note

For an increased machining accuracy the bore tolerance is much reduced compared to DIN 1835.
Bored through adjusting screw for coolant.
Other designs and sizes are available on request.

TAC Rockford - Tel. 815 962-4500 - info@TACRockford.com - www.TACRockford.com