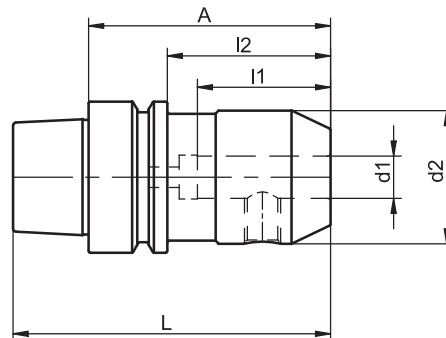


Reduction Sleeves for Straight Shanks with Lateral Driving Surface (Weldon)

similar to DIN 69 882-4



HSK-E	d1	A	Ref.no.	d2	l1	l2	L	d1 tolerance	kg
50	6	65	420.0001.363	25	35	39	90	+ 0.005	0.7
50	8	65	420.0002.363	28	35	39	90	+ 0.005	0.8
50	10	65	420.0003.363	35	39	39	90	+ 0.005	0.8
50	12	80	420.0004.363	42	44	54	105	+ 0.005	0.9
50	16	80	420.0006.363	48	47	54	105	+ 0.005	1.0
50	18	80	420.0007.363	50	47	54	105	+ 0.005	1.0
50	20	80	420.0008.363	52	49	54	105	+ 0.007	1.0
63	6	65	420.0001.364	25	35	39	97	+ 0.005	0.8
63	8	65	420.0002.364	28	35	39	97	+ 0.005	0.8
63	10	65	420.0003.364	35	39	39	97	+ 0.005	0.9
63	12	80	420.0004.364	42	44	54	112	+ 0.005	1.2
63	14	80	420.0005.364	44	44	54	112	+ 0.005	1.2
63	16	80	420.0006.364	48	47	54	112	+ 0.005	1.3
63	20	80	420.0008.364	52	49	54	112	+ 0.007	1.4
63	25	110	420.0009.364	65	54	84	142	+ 0.007	2.3
63	32	110	420.0010.364	72	58	84	142	+ 0.007	2.5

For coolant tubes see accessories page 4.8

For clamping screws see accessories page 4.12

Use

For holding shank tools with lateral driving surface,
DIN 1835 type B and DIN 6535 type HB.

Design

Permissible concentricity deviation of hollow taper shank to location hole d1 = 0.003 mm.

Chucks are fine balanced according to ISO 1940-1 G 6.3 at 12,000 min⁻¹.

Standard Specification

Clamping screw included.
From location hole d1 = 25 mm 2 clamping screws are included.

Note

For an increased machining accuracy the bore tolerance is much reduced compared to DIN 1835

Other designs and sizes are available on request.