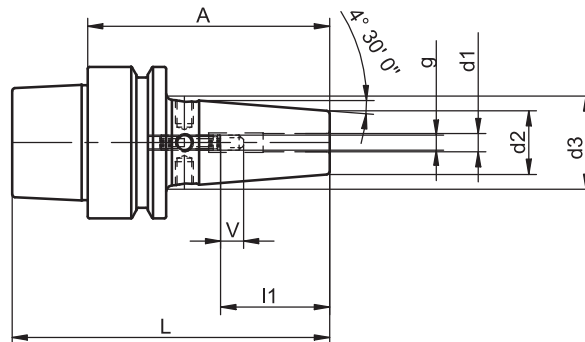


i-tec® Shrink Fit Chucks Standard Version

similar to DIN 69 882-8, type G



HSK-E	d1	A	Ref.no.	d2	d3	l1	g	L	V	kg
32	3	65	311.0011.361	12	17	-	-	81	10	0.2
32	4	65	311.0012.361	12	17	-	-	81	10	0.2
32	5	65	311.0013.361	12	17	-	-	81	10	0.2
32	6	70	311.0003.361	21	26	36	M 5	86	10	0.4
32	8	70	311.0004.361	21	26	36	M 6	86	10	0.4
32	10	70	311.0005.361	24	30	41	M 8 x 1	86	10	0.4
40	3	65	311.0011.362	12	17	-	-	85	10	0.3
40	4	65	311.0012.362	12	17	-	-	85	10	0.3
40	5	65	311.0013.362	12	17	-	-	85	10	0.3
40	6	80	311.0001.362	21	31	36	M 5	100	10	0.4
40	8	80	311.0002.362	21	31	36	M 6	100	10	0.4
40	10	80	311.0003.362	24	34	41	M 8 x 1	100	10	0.6
40	12	90	311.0004.362	24	35	47	M10 x 1	110	10	0.6
50	3	65	311.0011.363	12	17	-	-	90	10	0.5
50	4	65	311.0012.363	12	17	-	-	90	10	0.5
50	5	65	311.0013.363	12	17	-	-	90	10	0.5
50	6	80	311.0001.363	21	30	36	M 5	105	10	0.6
50	8	80	311.0002.363	21	30	36	M 6	105	10	0.6
50	10	85	311.0003.363	24	33	41	M 8 x 1	110	10	0.7
50	12	90	311.0004.363	24	34	47	M10 x 1	115	10	0.7
50	14	90	311.0005.363	27	37	47	M10 x 1	115	10	0.8
50	16	95	311.0006.363	27	38	50	M12 x 1	120	10	0.8

For coolant tubes see accessories page 4.8

For adjusting screws see accessories page 4.8

Design

Permissible concentricity deviation of hollow taper shank to location hole $d_1 = 0.003$ mm (measured at $3 \times D$ cantilever length).

Chucks are fine balanced according to ISO 1940-1 G 2.5 at $25,000 \text{ min}^{-1}$.

The clamping diameter is designed for a shank tolerance of h6.

Standard Specification

Adjusting screw for length adjustment (from $\varnothing 6$) not included.

Note

Other designs and sizes are available on request.

TAC Rockford - Tel. 815 962-4500 - info@TACRockford.com - www.TACRockford.com