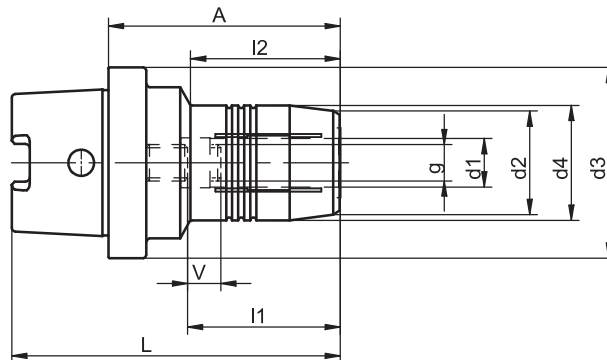


## Hydraulic Expansion Chucks

DIN 69 882-7



HSK-C	d1	A	Ref.no.	d2	d3	d4	l1	l2	g	V	kg
40	6	60	<b>702.0001.341</b>	22	40	26	37.5	36.5	M 5	10	0.4
40	8	60	<b>702.0002.341</b>	24	40	28	37.5	37.5	M 6	10	0.4
40	10	65	<b>702.0003.341</b>	26	40	30	42.5	42.5	M 8 x 1	10	0.5
40	12	70	<b>702.0004.341</b>	28	40	32	47.5	48.5	M10 x 1	10	0.6
50	6	60	<b>702.0001.342</b>	22	50	26	37.5	29.5	M 5	10	0.7
50	8	60	<b>702.0002.342</b>	24	50	28	37.5	30.5	M 6	10	0.7
50	10	65	<b>702.0003.342</b>	26	50	30	42.5	35.5	M 8 x 1	10	0.7
50	12	75	<b>702.0004.342</b>	28	50	32	47.5	46.5	M10 x 1	10	0.8
50	14	75	<b>702.0005.342</b>	30	50	34	47.5	47.0	M10 x 1	10	0.8
50	16	80	<b>702.0006.342</b>	34	50	38	52.5	52.0	M12 x 1	10	0.8
50	18	80	<b>702.0007.342</b>	36	50	40	52.5	53.5	M12 x 1	10	1.5
50	20	80	<b>702.0008.342</b>	38	50	42	52.5	54.5	M16 x 1	10	1.2
63	6	60	<b>702.0001.343</b>	22	63	26	37.5	25.5	M 5	10	1.0
63	8	60	<b>702.0002.343</b>	24	63	28	37.5	26.5	M 6	10	1.0
63	10	65	<b>702.0003.343</b>	26	63	30	42.5	31.5	M 8 x 1	10	1.0
63	12	75	<b>702.0004.343</b>	28	63	32	47.5	42.5	M10 x 1	10	1.1
63	14	75	<b>702.0005.343</b>	30	63	34	47.5	43.5	M10 x 1	10	1.0
63	16	80	<b>702.0006.343</b>	34	63	38	52.5	49.5	M12 x 1	10	1.1
63	18	80	<b>702.0007.343</b>	36	63	40	52.5	50.0	M12 x 1	10	1.2
63	20	80	<b>702.0008.343</b>	38	63	42	52.5	50.5	M16 x 1	10	1.2

For adjusting screws see accessories page 4.11

For reduction bushes see accessories page 4.11

### Use

For shank tools according to DIN 1835 type A and B and DIN 6535 type HA and HB.

Shanks according to DIN 6535 type HE are only applicable with reduction bushes.

Shank quality h6, Ra min = 0.3.

### Design

Chucks are fine balanced according to ISO 1940-1 G 6.3 at 12,000 min<sup>-1</sup>.

### Standard Specification

Bored through adjusting screw included.

### Note

Other designs and sizes are available on request.