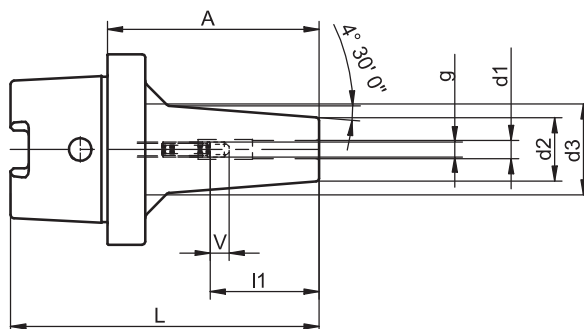


i-tec® Shrink Fit Chucks Standard Version

DIN 69 882-8, type G



HSK-C	d1	A	Ref.no.	d2	d3	l1	g	L	V	kg
40	6	70	311.0001.341	21	30	36	M 5	90	10	0.3
40	8	70	311.0002.341	21	30	36	M 6	90	10	0.3
40	10	70	311.0003.341	24	34	41	M 8 x 1	90	10	0.4
40	12	80	311.0004.341	24	35	47	M10 x 1	100	10	0.4
50	6	70	311.0001.342	21	30	36	M 5	95	10	0.5
50	8	70	311.0002.342	21	30	36	M 6	95	10	0.4
50	10	75	311.0003.342	24	33	41	M 8 x 1	100	10	0.5
50	12	80	311.0004.342	24	34	47	M10 x 1	105	10	0.5
50	14	80	311.0005.342	27	37	47	M10 x 1	105	10	0.6
50	16	85	311.0006.342	27	39	50	M12 x 1	110	10	0.6
63	6	70	311.0001.343	21	30	36	M 5	102	10	0.6
63	8	70	311.0002.343	21	30	36	M 6	102	10	0.6
63	10	75	311.0003.343	24	34	41	M 8 x 1	107	10	0.7
63	12	80	311.0004.343	24	34	47	M10 x 1	112	10	0.7
63	14	80	311.0005.343	27	36	47	M10 x 1	112	10	0.8
63	16	85	311.0006.343	27	36	50	M12 x 1	117	10	0.8
63	18	85	311.0007.343	33	44	50	M12 x 1	117	10	0.9
63	20	90	311.0008.343	33	45	52	M16 x 1	122	10	1.0
63	25	100	311.0009.343	44	53	58	M16 x 1	132	10	1.4
63	32	110	311.0010.343	44	53	62	M16 x 1	142	10	1.4

For adjusting screws see accessories page 4.8

Design

Permissible concentricity deviation of hollow taper shank to location hole $d_1 = 0.003$ mm (measured at $3 \times D$ cantilever length).
Chucks are fine balanced according to ISO 1940-1 G 6.3 at $12,000 \text{ min}^{-1}$.
The clamping diameter is designed for a shank tolerance of h6.

Standard Specification

Adjusting screw for length adjustment is not included.

Note

Other designs and sizes are available on request.

TAC Rockford - Tel. 815 962-4500 - info@TACRockford.com - www.TACRockford.com