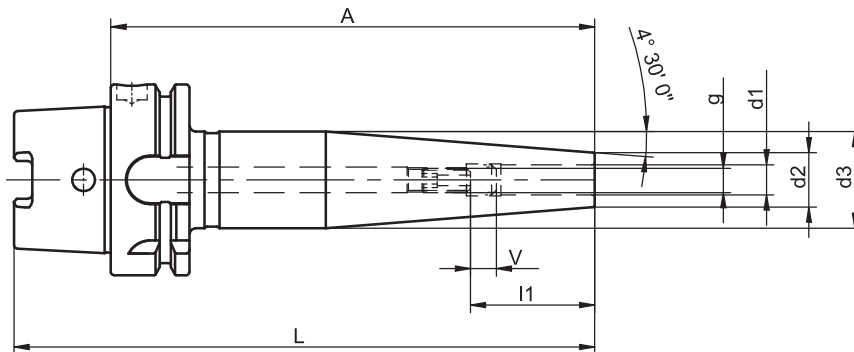


i-tec® Shrink Fit Chucks Slim Version

similar to DIN 69 882-8, type G



HSK-A	d1	A	Ref.no.	d2	d3	l1	g	L	V	kg
63	6	120	311.0703.322	15	30	36	M 5	152	10	1.0
63	6	160	311.0713.322	15	30	36	M 5	192	10	1.2
63	8	120	311.0704.322	15	30	36	M 6	152	10	1.0
63	8	160	311.0714.322	15	30	36	M 6	192	10	1.2
63	8	200	311.0792.322	15	30	36	M 6	232	10	1.4
63	10	120	311.0705.322	18	33	41	M 8 x 1	152	10	1.0
63	10	160	311.0715.322	18	32	41	M 8 x 1	192	10	1.3
63	12	120	311.0706.322	18	33	47	M10 x 1	152	10	1.0
63	12	160	311.0716.322	18	32	47	M10 x 1	192	10	1.3
63	12	200	311.0794.322	18	32	47	M10 x 1	232	10	1.5
100	6	120	311.0703.324	15	30	36	M 5	170	10	2.3
100	6	160	311.0713.324	15	30	36	M 5	210	10	2.5
100	8	120	311.0704.324	15	30	36	M 6	170	10	2.3
100	8	160	311.0714.324	15	30	36	M 6	210	10	2.5
100	10	120	311.0705.324	18	33	41	M 8 x 1	170	10	2.4
100	10	160	311.0715.324	18	32	41	M 8 x 1	210	10	2.6
100	12	120	311.0706.324	18	33	47	M10 x 1	170	10	2.4
100	12	160	311.0716.324	18	32	47	M10 x 1	210	10	2.6

For coolant tubes see accessories page 4.8

For adjusting screws see accessories page 4.8

Design

Permissible concentricity deviation of hollow taper shank to location hole $d_1 = 0.003$ mm (measured at $3 \times D$ cantilever length).

Chucks are fine balanced according to ISO 1940-1 G 2.5 at $25,000 \text{ min}^{-1}$.

The clamping diameter is designed for a shank tolerance of h6.

Standard Specification

Adjusting screw for length adjustment is not included.

Note

Other designs and sizes are available on request.

TAC Rockford - Tel. 815 962-4500 - info@TACRockford.com - www.TACRockford.com