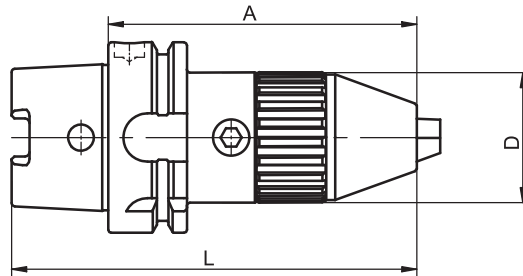


Drill Chucks



HSK-A	Clamping range	A	Ref.no. Version 1	Ref.no. Version 2	D	L	kg
40	1 - 13	110	490.0001.320		43	130	0.8
50	1 - 13	100	490.0001.321	490.0101.321	43	125	1.3
63	1 - 13	102	490.0001.322	490.0101.322	43	134	2.0
63	2.5 - 16	122	490.0002.322	490.0102.322	56	154	2.5
80	1 - 13	109	490.0001.323	490.0101.323	43	149	2.7
80	2.5 - 16	129	490.0002.323	490.0102.323	56	169	3.2
100	1 - 13	109	490.0001.324	490.0101.324	43	159	3.0
100	2.5 - 16	129	490.0002.324	490.0102.324	56	179	3.5

For coolant tubes see accessories page 4.8

Use

For holding tools with straight shank for use in machining centres and NC machines.

Design

High precision and truth of running. For clockwise and anti-clockwise rotation.

Simple to operate, clamping and releasing by an allen key.

Note

Other designs and sizes are available on request.

Version 1

Central coolant supply for tools without internal cooling. Coolant passes out parallel to the tool's cutting edge.

Version 2

For tools with internal cooling. Coolant passes out at the cutting edge.