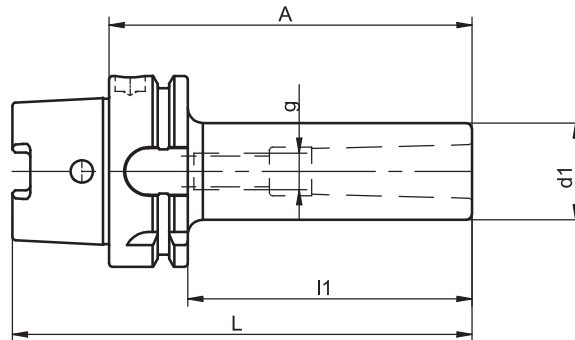


## Reduction Sleeves for Morse Tapers with Thread



HSK-A	MT	A	Ref.no.	d1	l1	L	g	kg
50	1	100	<b>458.0001.321</b>	25	74	125	M 6	1.0
50	2	120	<b>458.0002.321</b>	32	94	145	M10	1.1
50	3	130	<b>458.0003.321</b>	40	104	155	M12	1.5
63	1	100	<b>458.0001.322</b>	25	74	132	M 6	1.0
63	2	120	<b>458.0002.322</b>	32	94	152	M10	1.2
63	3	130	<b>458.0003.322</b>	40	104	162	M12	1.4
63	4	160	<b>458.0004.322</b>	48	134	192	M16	2.0
80	1	120	<b>458.0001.323</b>	25	94	160	M 6	2.0
80	2	120	<b>458.0002.323</b>	32	94	160	M10	2.4
80	3	140	<b>458.0003.323</b>	40	104	180	M12	2.5
80	4	170	<b>458.0004.323</b>	48	144	210	M16	3.2
80	5	200	<b>458.0005.323</b>	63	184	240	M20	4.0
100	1	120	<b>458.0001.324</b>	25	91	170	M 6	2.1
100	2	120	<b>458.0002.324</b>	32	91	170	M10	2.6
100	3	140	<b>458.0003.324</b>	40	111	190	M12	2.7
100	4	170	<b>458.0004.324</b>	48	141	220	M16	3.5
100	5	200	<b>458.0005.324</b>	63	171	250	M20	4.2

For coolant tubes see accessories page 4.8

For further accessories such as retaining screws, keys and threaded rings see from page 4.14 to page 4.15

### Design

Permissible concentricity deviation of hollow taper shank to inner taper 0.008 mm.

### Note

Other designs and sizes are available on request.

### Standard Specification

Retaining screw and threaded ring included.

**TAC Rockford - Tel. 815 962-4500 - info@TACRockford.com - www.TACRockford.com**