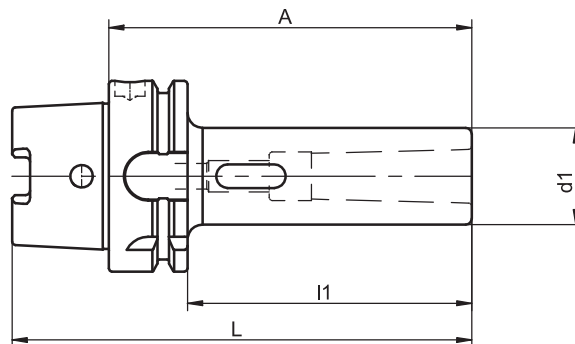


Reduction Sleeves for Morse Tapers with Tang

DIN 228, part 2 type D



HSK-A	MT	A	Ref.no.	d1	l1	L	kg
50	1	100	454.0001.321	25	74	125	1.0
50	2	120	454.0002.321	32	94	145	1.1
50	3	140	454.0003.321	40	114	165	1.6
63	1	100	454.0001.322	25	74	132	1.0
63	2	120	454.0002.322	32	94	152	1.2
63	3	140	454.0003.322	40	114	172	1.5
63	4	160	454.0004.322	48	134	192	2.0
80	1	110	454.0001.323	25	84	150	1.9
80	2	120	454.0002.323	32	94	160	2.4
80	3	150	454.0003.323	40	114	190	2.6
80	4	170	454.0004.323	48	144	210	3.2
80	5	200	454.0005.323	63	184	240	4.0
100	1	110	454.0001.324	25	81	160	2.0
100	2	120	454.0002.324	32	91	170	2.6
100	3	150	454.0003.324	40	121	200	2.9
100	4	170	454.0004.324	48	141	220	3.5
100	5	200	454.0005.324	63	171	250	4.2

For coolant tubes see accessories page 4.8

Design

Permissible concentricity deviation of hollow taper shank to inner taper 0.008 mm.

Note

Other designs and sizes are available on request.

TAC Rockford - Tel. 815 962-4500 - info@TACRockford.com - www.TACRockford.com