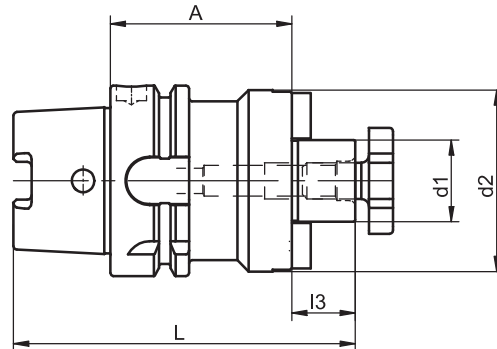


Shell End Mill Arbors with Enlarged Contact Diameter

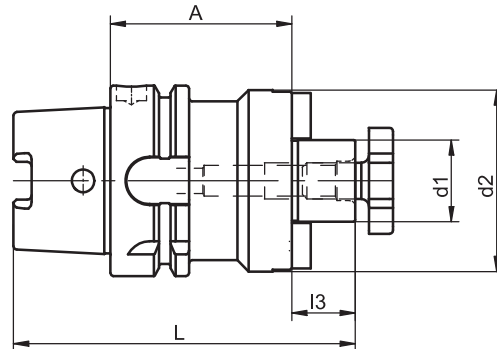
DIN 69 882-3



HSK-A	d1	A	Ref.no.	d2	l3	L	kg
50	16	50	579.0009.321	40	17	94	0.8
50	22	60	579.0001.321	50	19	104	0.9
50	27	60	579.0002.321	60	21	106	1.1
63	16	50	579.0009.322	40	17	99	0.9
63	16	100	579.0039.322	40	17	149	1.4
63	16	160	579.0049.322	40	17	209	2.0
63	22	50	579.0001.322	50	19	101	1.1
63	22	100	579.0031.322	50	19	151	1.8
63	22	160	579.0041.322	50	19	211	2.7
63	27	60	579.0002.322	60	21	113	1.4
63	27	100	579.0032.322	60	21	153	2.2
63	27	160	579.0042.322	60	21	213	3.5
63	32	60	579.0003.322	78	24	116	1.6
63	32	100	579.0033.322	78	24	156	3.0
63	32	160	579.0043.322	78	24	216	5.2
63	40	60	579.0004.322	89	27	119	1.8
63	40	100	579.0034.322	89	27	159	3.9
80	22	50	579.0001.323	50	19	109	2.1
80	27	50	579.0002.323	60	21	111	2.3
80	32	60	579.0003.323	78	24	114	2.5
80	40	60	579.0004.323	89	27	117	3.3
100	16	50	579.0009.324	40	17	117	2.2
100	16	100	579.0039.324	40	17	167	2.7
100	16	160	579.0049.324	40	17	227	3.3
100	22	50	579.0001.324	50	19	119	2.4
100	22	100	579.0031.324	50	19	169	3.1
100	22	160	579.0041.324	50	19	229	4.0
100	27	50	579.0002.324	60	21	121	2.5
100	27	100	579.0032.324	60	21	171	3.6
100	27	160	579.0042.324	60	21	231	4.7
100	32	50	579.0003.324	78	24	124	2.9
100	32	100	579.0033.324	78	24	174	4.7
100	32	160	579.0043.324	78	24	234	6.9
100	40	60	579.0004.324	89	27	137	3.5
100	40	100	579.0034.324	89	27	177	5.4
100	40	160	579.0044.324	89	27	237	8.3

Shell End Mill Arbors with Enlarged Contact Diameter

DIN 69 882-3



HSK-A	d1	A	Ref.no.	d2	l3	L	kg
100	50	70	579.0005.324	120	30	150	5.4
100	50	100	579.0035.324	120	30	180	7.1
100	50	160	579.0045.324	120	30	240	11.8
100	60	70	579.0006.324	140	40	160	6.3
100	60	100	579.0036.324	140	40	190	9.1

For coolant tubes see accessories page 4.8

For further accessories such as cutter retaining screws, keys or drive keys see accessories from page 4.12 to page 4.14

Use

For clamping shell end mills and milling cutters with tenon drive.

Clamping \varnothing 40 and 60 with 4 threaded holes for holding cutters with tool holding according to DIN 2079.

Note

Other designs and sizes are available on request.

Design

Permissible concentricity deviation of hollow taper shank to arbor $d1 = 0.006$ mm.
Central boring for coolant supply.

Standard Specification

Cutter retaining screw and tightened drive keys included.

TAC Rockford - Tel. 815 962-4500 - info@TACRockford.com - www.TACRockford.com