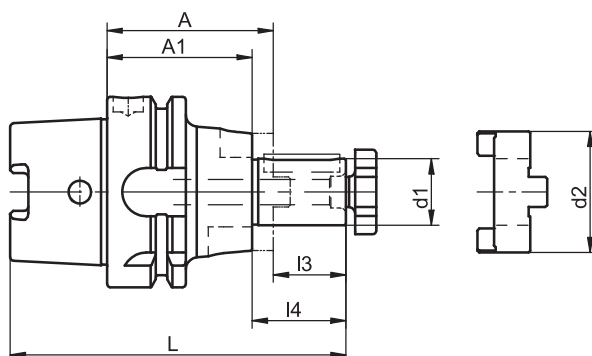


## Shell End Mill Arbors

### for Milling Cutters with Longitudinal Slot or Tenon Drive

DIN 69 882-2

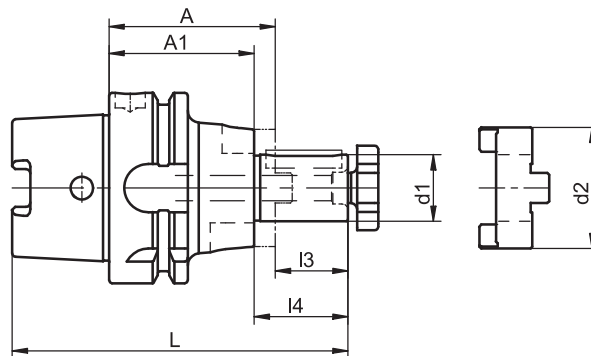


| HSK-A | d1 | A   | Ref.no.             | d2 | l3 | l4 | L   | A1  | kg  |
|-------|----|-----|---------------------|----|----|----|-----|-----|-----|
| 40    | 16 | 50  | <b>489.0001.320</b> | 32 | 17 | 27 | 87  | 40  | 0.5 |
| 40    | 22 | 50  | <b>489.0002.320</b> | 40 | 19 | 31 | 89  | 38  | 0.6 |
| 40    | 27 | 65  | <b>489.0003.320</b> | 48 | 21 | 33 | 106 | 53  | 0.8 |
| 50    | 16 | 50  | <b>489.0001.321</b> | 32 | 17 | 27 | 92  | 40  | 0.7 |
| 50    | 22 | 50  | <b>489.0002.321</b> | 40 | 19 | 31 | 94  | 38  | 0.8 |
| 50    | 27 | 65  | <b>489.0003.321</b> | 48 | 21 | 33 | 111 | 53  | 1.0 |
| 50    | 32 | 65  | <b>489.0004.321</b> | 58 | 24 | 38 | 114 | 51  | 1.2 |
| 63    | 16 | 60  | <b>489.0001.322</b> | 32 | 17 | 27 | 109 | 50  | 0.9 |
| 63    | 16 | 100 | <b>489.0031.322</b> | 32 | 17 | 27 | 149 | 90  | 1.2 |
| 63    | 16 | 160 | <b>489.0041.322</b> | 32 | 17 | 27 | 209 | 150 | 2.0 |
| 63    | 22 | 60  | <b>489.0002.322</b> | 40 | 19 | 31 | 111 | 48  | 1.0 |
| 63    | 22 | 100 | <b>489.0032.322</b> | 40 | 19 | 31 | 151 | 88  | 1.5 |
| 63    | 22 | 160 | <b>489.0042.322</b> | 40 | 19 | 31 | 211 | 148 | 2.2 |
| 63    | 27 | 60  | <b>489.0003.322</b> | 48 | 21 | 33 | 113 | 48  | 1.1 |
| 63    | 27 | 100 | <b>489.0033.322</b> | 48 | 21 | 33 | 153 | 88  | 1.6 |
| 63    | 27 | 160 | <b>489.0043.322</b> | 48 | 21 | 33 | 213 | 148 | 2.4 |
| 63    | 32 | 60  | <b>489.0004.322</b> | 58 | 24 | 38 | 116 | 46  | 1.2 |
| 63    | 32 | 100 | <b>489.0034.322</b> | 58 | 24 | 38 | 156 | 86  | 2.0 |
| 63    | 32 | 160 | <b>489.0044.322</b> | 58 | 24 | 38 | 216 | 146 | 3.2 |
| 63    | 40 | 70  | <b>489.0005.322</b> | 70 | 27 | 41 | 129 | 56  | 1.5 |
| 63    | 40 | 100 | <b>489.0035.322</b> | 70 | 27 | 41 | 159 | 86  | 2.4 |
| 63    | 40 | 160 | <b>489.0045.322</b> | 70 | 27 | 41 | 219 | 146 | 4.2 |
| 80    | 16 | 60  | <b>489.0001.323</b> | 32 | 17 | 27 | 117 | 50  | 1.5 |
| 80    | 22 | 60  | <b>489.0002.323</b> | 40 | 19 | 31 | 119 | 48  | 1.8 |
| 80    | 27 | 60  | <b>489.0003.323</b> | 48 | 21 | 33 | 121 | 48  | 2.0 |
| 80    | 32 | 60  | <b>489.0004.323</b> | 58 | 24 | 38 | 124 | 46  | 2.4 |
| 80    | 40 | 70  | <b>489.0005.323</b> | 70 | 27 | 41 | 137 | 56  | 2.9 |
| 80    | 50 | 80  | <b>489.0006.323</b> | 90 | 30 | 46 | 150 | 64  | 3.3 |
| 100   | 16 | 60  | <b>489.0001.324</b> | 32 | 17 | 27 | 127 | 50  | 2.0 |
| 100   | 16 | 100 | <b>489.0031.324</b> | 32 | 17 | 27 | 167 | 90  | 2.6 |
| 100   | 16 | 160 | <b>489.0041.324</b> | 32 | 17 | 27 | 227 | 150 | 3.4 |
| 100   | 22 | 60  | <b>489.0002.324</b> | 40 | 19 | 31 | 129 | 48  | 2.3 |
| 100   | 22 | 100 | <b>489.0032.324</b> | 40 | 19 | 31 | 169 | 88  | 2.8 |
| 100   | 22 | 160 | <b>489.0042.324</b> | 40 | 19 | 31 | 229 | 148 | 3.9 |
| 100   | 27 | 60  | <b>489.0003.324</b> | 48 | 21 | 33 | 131 | 48  | 2.4 |
| 100   | 27 | 100 | <b>489.0033.324</b> | 48 | 21 | 33 | 171 | 88  | 3.1 |
| 100   | 27 | 160 | <b>489.0043.324</b> | 48 | 21 | 33 | 231 | 148 | 3.8 |
| 100   | 32 | 60  | <b>489.0004.324</b> | 58 | 24 | 38 | 134 | 46  | 2.5 |
| 100   | 32 | 100 | <b>489.0034.324</b> | 58 | 24 | 38 | 174 | 86  | 3.5 |
| 100   | 32 | 160 | <b>489.0044.324</b> | 58 | 24 | 38 | 234 | 146 | 4.5 |
| 100   | 40 | 70  | <b>489.0005.324</b> | 70 | 27 | 41 | 147 | 56  | 3.2 |

TAC Rockford - Tel. 815 962-4500 - info@TACRockford.com - www.TACRockford.com

## Shell End Mill Arbors for Milling Cutters with Longitudinal Slot or Tenon Drive

DIN 69 882-2



| HSK-A | d1 | A   | Ref.no.             | d2 | l3 | l4 | L   | A1  | kg  |
|-------|----|-----|---------------------|----|----|----|-----|-----|-----|
| 100   | 40 | 100 | <b>489.0035.324</b> | 70 | 27 | 41 | 177 | 86  | 3.9 |
| 100   | 40 | 160 | <b>489.0045.324</b> | 70 | 27 | 41 | 237 | 146 | 5.8 |
| 100   | 50 | 80  | <b>489.0006.324</b> | 90 | 30 | 46 | 160 | 64  | 3.8 |

For coolant tubes see accessories page 4.8

For further accessories such as cutter retaining screws, keys, feather keys or drive rings see accessories from page 4.12 to page 4.13

### Use

For clamping shell end mills and milling cutters with longitudinal slot or tenon drive.

### Standard Specification

Cutter retaining screw, feather key with withdrawal thread and drive ring included.

### Design

Permissible concentricity deviation of hollow taper shank to arbor  $d1 = 0.006$  mm.  
Cutter drive according to DIN 138.

### Note

Other designs and sizes are available on request.

**TAC Rockford - Tel. 815 962-4500 - info@TACRockford.com - www.TACRockford.com**