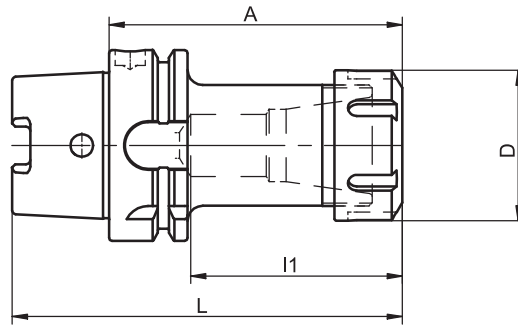


Collet Chucks

for ER/ESX ER-25/32/40 Collets without Internal Thread

similar to DIN 69 882-6



HSK-A	Clamping range	A	Ref.no.	D	l1	L	kg
40	1 - 16	80	697.0203.320	42	60	100	0.5
50	1 - 16	100	697.0204.321	42	72	125	1.2
50	2 - 20	100	697.0201.321	50	73	125	1.2
63	1 - 16	100	697.0204.322	42	69	132	1.2
63	1 - 16	160	697.0244.322	42	69	172	1.8
63	2 - 20	100	697.0201.322	50	74	132	1.2
63	2 - 20	160	697.0241.322	50	73	173	1.7
63	3 - 26	120	697.0202.322	63	87	152	1.7
63	3 - 26	160	697.0242.322	63	87	192	2.3
100	1 - 16	100	697.0204.324	42	69	150	2.6
100	1 - 16	160	697.0244.324	42	69	210	3.2
100	2 - 20	100	697.0201.324	50	70	150	2.7
100	2 - 20	160	697.0241.324	50	70	210	3.6
100	3 - 26	120	697.0202.324	63	87	170	3.4
100	3 - 26	160	697.0242.324	63	87	210	4.2

For coolant tubes see accessories page 4.8

For further accessories such as collets, clamping nuts or clamping keys see accessories from page 4.3 to page 4.7

Use

For clamping tools with straight shank according to DIN 6499 type A and B.

Design

Permissible concentricity deviation of hollow taper shank to inner taper 0.003 mm. Chucks are fine balanced without clamping

nut according to ISO 1940-1 G 2.5 at 25,000 min⁻¹. Clamping nut balanced according to ISO 1940-1 G 2.5 at 25,000 min⁻¹.

Standard Specification

Collet chuck including clamping nut.

Note

Chip passage drilled out. Other designs and sizes are available on request.

TAC Rockford - Tel. 815 962-4500 - info@TACRockford.com - www.TACRockford.com