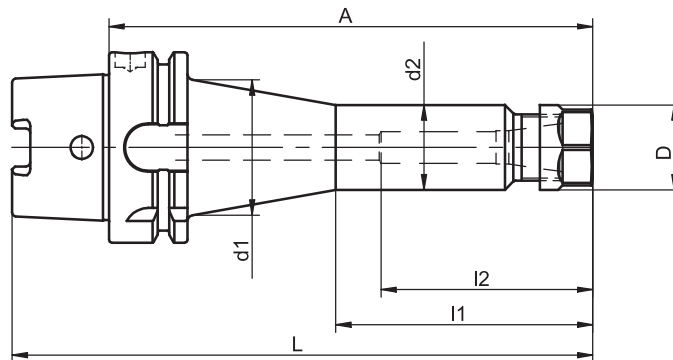


Collet Chucks

for ER/ESX ER-11/16 Collets without Internal Thread

similar to DIN 69 882-6



HSK-A	Clamping range	A	Ref.no.	d1	d2	D	l1	l2	L	kg
40	0.5 - 7	80	698.0211.320	-	18.5	19	-	42	100	0.3
40	0.5 - 10	80	698.0201.320	-	28	28	-	61	100	0.4
50	0.5 - 10	100	698.0201.321	-	28	28	-	70	125	0.6
63	0.5 - 10	100	698.0201.322	-	28	28	-	70	132	1.0
63	0.5 - 10	160	698.0202.322	46	28	28	85	70	192	1.7
100	0.5 - 10	100	698.0201.324	-	28	28	-	70	150	2.9
100	0.5 - 10	160	698.0202.324	45	28	28	85	70	210	3.4

For coolant tubes see accessories page 4.8

For further accessories such as collets, clamping nuts or clamping keys see accessories from page 4.3 to page 4.7

Use

For clamping tools with straight shank according to DIN 6499 type A and B.

Design

Permissible concentricity deviation of hollow taper shank to inner taper 0.003 mm. Chucks are fine balanced without clamping

nut according to ISO 1940-1 G 2.5 at 25,000 min⁻¹. Clamping nut balanced according to ISO 1940-1 G 2.5 at 25,000 min⁻¹.

Standard Specification

Collet chuck including clamping nut.

Note

Chip passage drilled out. Other designs and sizes are available on request.

TAC Rockford - Tel. 815 962-4500 - info@TACRockford.com - www.TACRockford.com