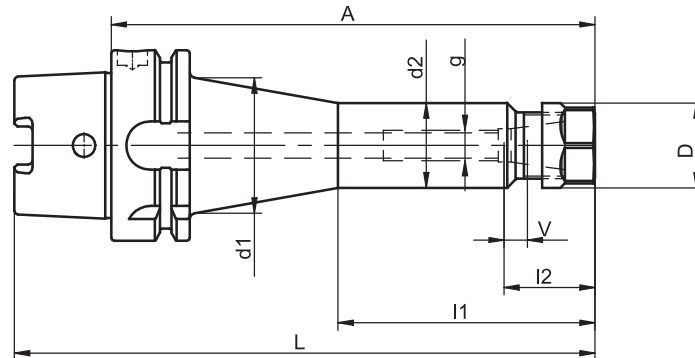


Collet Chucks

for ER/ESX ER-16 Collets with Internal Thread

DIN 69 882-6



HSK-A	Clamping range	A	Ref.no.	d1	d2	D	l1	l2	g	L	V	kg
40	0.5 - 10	80	698.0001.320	-	28	32	-	27	M10	100	10	0.4
50	0.5 - 10	100	698.0001.321	-	28	32	-	27	M10	125	10	0.6
63	0.5 - 10	75	698.0011.322	-	28	32	-	27	M10	107	10	0.8
63	0.5 - 10	100	698.0001.322	-	28	32	-	27	M10	132	10	1.0
63	0.5 - 10	160	698.0002.322	45	28	32	85	27	M10	192	10	1.7
100	0.5 - 10	100	698.0001.324	-	28	32	-	27	M12	150	10	2.9
100	0.5 - 10	160	698.0002.324	60	28	32	85	27	M12	210	10	3.4

For coolant tubes see accessories page 4.8

For adjusting screws see accessories page 4.9

For further accessories such as collets, clamping nuts or clamping keys see accessories from page 4.3 to page 4.7

Use

For clamping tools with straight shanks according to DIN 6499 type A and B.

Design

Permissible concentricity deviation of hollow taper shank to inner taper 0.003 mm. Chucks are fine balanced without clamping

nut according to ISO 1940-1 G 6.3 at 12,000 min⁻¹. Clamping nut balanced to G 6.3 at 18,000 min⁻¹.

Standard Specification

Collet chuck including clamping nut.

Note

Collet chucks are equipped with internal thread for adjusting screws. Other designs and sizes are available on request.

TAC Rockford - Tel. 815 962-4500 - info@TACRockford.com - www.TACRockford.com