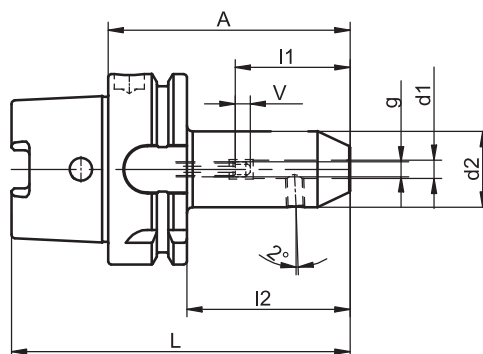


## Reduction Sleeves for Straight Shanks with Inclined Clamping Surface (Whistle Notch)

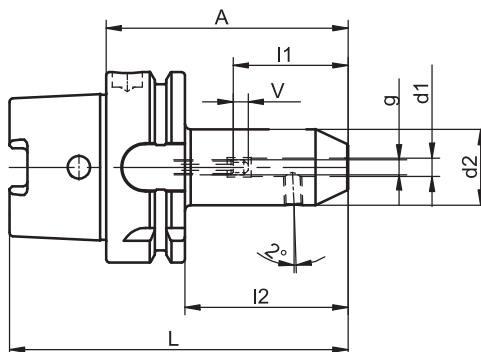
DIN 69 882-5



HSK-A	d1	A	Ref.no.	d2	l1	l2	g	L	d1 tolerance	V	kg
40	6	80	<b>420.0151.320</b>	25	38	60	M 5	100	+ 0.005	10	0.6
40	8	80	<b>420.0152.320</b>	28	38	60	M 6	100	+ 0.005	10	0.7
40	10	80	<b>420.0153.320</b>	35	41	60	M 8	100	+ 0.005	10	0.7
40	12	90	<b>420.0154.320</b>	42	47	70	M10	110	+ 0.005	10	1.1
40	14	90	<b>420.0155.320</b>	44	47	70	M10	110	+ 0.005	10	1.2
40	16	90	<b>420.0156.320</b>	48	50	70	M12	110	+ 0.005	10	1.2
50	6	80	<b>420.0151.321</b>	25	38	54	M 5	105	+ 0.005	10	0.8
50	8	80	<b>420.0152.321</b>	28	38	54	M 6	105	+ 0.005	10	0.9
50	10	80	<b>420.0153.321</b>	35	41	54	M 8	105	+ 0.005	10	0.9
50	12	90	<b>420.0154.321</b>	42	47	64	M10	115	+ 0.005	10	1.3
50	14	90	<b>420.0155.321</b>	44	47	64	M10	115	+ 0.005	10	1.4
50	16	90	<b>420.0156.321</b>	48	50	64	M12	115	+ 0.005	10	1.4
50	18	90	<b>420.0157.321</b>	50	50	64	M12	115	+ 0.005	10	1.6
50	20	100	<b>420.0158.321</b>	52	52	74	M16	125	+ 0.007	10	1.7
63	6	80	<b>420.0151.322</b>	25	38	54	M 5	112	+ 0.005	10	0.9
63	8	80	<b>420.0152.322</b>	28	38	54	M 6	112	+ 0.005	10	0.9
63	10	80	<b>420.0153.322</b>	35	41	54	M 8	112	+ 0.005	10	1.0
63	12	90	<b>420.0154.322</b>	42	47	64	M10	122	+ 0.005	10	1.3
63	14	90	<b>420.0155.322</b>	44	47	64	M10	122	+ 0.005	10	1.3
63	16	100	<b>420.0156.322</b>	48	50	74	M12	132	+ 0.005	10	1.6
63	18	100	<b>420.0157.322</b>	50	50	74	M12	132	+ 0.005	10	1.6
63	20	100	<b>420.0158.322</b>	52	52	74	M16	132	+ 0.007	10	1.7
63	25	110	<b>420.0159.322</b>	65	58	84	M20	142	+ 0.007	10	2.2
63	32	110	<b>420.0160.322</b>	72	61	84	M20	142	+ 0.007	10	2.5
80	6	90	<b>420.0151.323</b>	25	38	64	M 5	130	+ 0.005	10	1.6
80	8	90	<b>420.0152.323</b>	28	38	64	M 6	130	+ 0.005	10	1.6
80	10	90	<b>420.0153.323</b>	35	41	64	M 8	130	+ 0.005	10	2.0
80	12	100	<b>420.0154.323</b>	42	47	74	M10	140	+ 0.005	10	2.1
80	14	100	<b>420.0155.323</b>	44	47	74	M10	140	+ 0.005	10	2.1
80	16	100	<b>420.0156.323</b>	48	50	74	M12	140	+ 0.005	10	2.3
80	18	100	<b>420.0157.323</b>	50	50	74	M12	140	+ 0.005	10	2.4
80	20	110	<b>420.0158.323</b>	52	52	84	M16	150	+ 0.007	10	2.6
80	25	110	<b>420.0159.323</b>	65	58	94	M20	160	+ 0.007	10	3.1
80	32	120	<b>420.0160.323</b>	72	61	94	M20	160	+ 0.007	10	3.7

## Reduction Sleeves for Straight Shanks with Inclined Clamping Surface (Whistle Notch)

DIN 69 882-5



HSK-A	d1	A	Ref.no.	d2	l1	l2	g	L	d1 tolerance	V	kg
100	6	90	<b>420.0151.324</b>	25	38	61	M 5	140	+ 0.005	10	2.2
100	8	90	<b>420.0152.324</b>	28	38	61	M 6	140	+ 0.005	10	2.3
100	10	90	<b>420.0153.324</b>	35	41	61	M 8	140	+ 0.005	10	2.4
100	12	100	<b>420.0154.324</b>	42	47	71	M10	150	+ 0.005	10	2.7
100	14	100	<b>420.0155.324</b>	44	47	71	M10	150	+ 0.005	10	2.8
100	16	100	<b>420.0156.324</b>	48	50	71	M12	150	+ 0.005	10	2.9
100	18	100	<b>420.0157.324</b>	50	50	71	M12	150	+ 0.005	10	2.9
100	20	110	<b>420.0158.324</b>	52	52	81	M16	160	+ 0.007	10	3.1
100	25	120	<b>420.0159.324</b>	65	58	91	M20	170	+ 0.007	10	3.9
100	32	120	<b>420.0160.324</b>	72	61	91	M20	170	+ 0.007	10	4.3

For coolant tubes see accessories page 4.8

For clamping screws see accessories page 4.12

For adjusting screws see accessories page 4.9

### Use

For holding shank tools with inclined clamping surface (2°),  
DIN 1835 type E and DIN 6535 type HE.

### Design

Permissible concentricity deviation of hollow taper shank to location hole d 1 = 0.003 mm (measured at 3 x D cantilever length).

Chucks are fine balanced according to ISO 1940-1 G 6.3 at 12,000 min<sup>-1</sup>.

### Standard Specification

Clamping screw and adjusting screw included.  
From location hole d1 = 25 mm 2 clamping screws are included.

### Note

For an increased machining accuracy the bore tolerance is much reduced compared to DIN 1835.

Bored through adjusting screw for coolant. Other designs and sizes are available on request.

**TAC Rockford - Tel. 815 962-4500 - info@TACRockford.com - www.TACRockford.com**