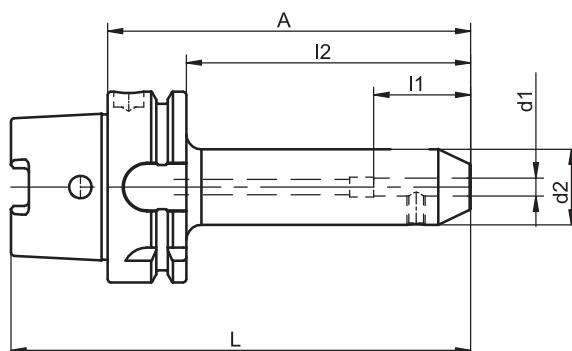


Reduction Sleeves for Straight Shanks with Lateral Driving Surface (Weldon)

DIN 69 882-4

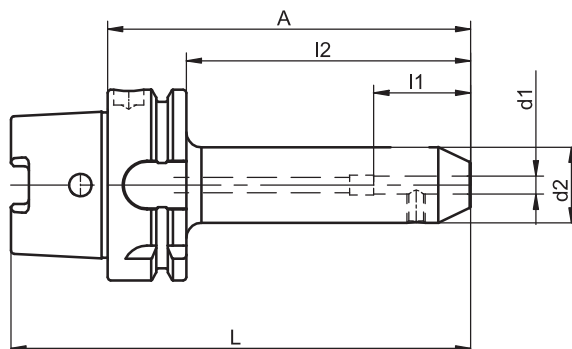


HSK-A	d1	A	Ref.no.	d2	l1	l2	L	d1 tolerance	kg
40	6	60	420.0001.320	25	35	40	80	+ 0.005	0.6
40	8	60	420.0002.320	28	35	40	80	+ 0.005	0.7
40	10	60	420.0003.320	35	39	40	80	+ 0.005	0.7
40	12	70	420.0004.320	42	44	50	90	+ 0.005	1.0
40	14	75	420.0005.320	44	44	55	95	+ 0.005	1.1
40	16	75	420.0006.320	48	47	55	95	+ 0.005	1.1
50	6	65	420.0001.321	25	35	39	90	+ 0.005	0.7
50	8	65	420.0002.321	28	35	39	90	+ 0.005	0.8
50	10	65	420.0003.321	35	39	39	90	+ 0.005	0.8
50	12	80	420.0004.321	42	44	54	105	+ 0.005	0.9
50	14	80	420.0005.321	44	44	54	105	+ 0.005	1.0
50	16	80	420.0006.321	48	47	54	105	+ 0.005	1.0
50	18	80	420.0007.321	50	47	54	105	+ 0.005	1.0
50	20	80	420.0008.321	52	49	54	105	+ 0.007	1.0
63	6	65	420.0001.322	25	35	39	97	+ 0.005	0.8
63	6	120	420.0031.322	25	35	94	152	+ 0.005	1.0
63	8	65	420.0002.322	28	35	39	97	+ 0.005	0.8
63	8	120	420.0032.322	28	35	94	152	+ 0.005	1.1
63	10	65	420.0003.322	35	39	39	97	+ 0.005	0.9
63	10	120	420.0033.322	35	39	94	152	+ 0.005	1.3
63	12	80	420.0004.322	42	44	54	112	+ 0.005	1.2
63	12	120	420.0034.322	42	44	94	152	+ 0.005	1.6
63	14	80	420.0005.322	44	44	54	112	+ 0.005	1.2
63	14	120	420.0035.322	44	44	94	152	+ 0.005	1.7
63	16	80	420.0006.322	48	47	54	112	+ 0.005	1.3
63	16	120	420.0036.322	48	47	94	152	+ 0.005	1.8
63	18	80	420.0007.322	50	47	54	112	+ 0.005	1.3
63	18	120	420.0037.322	50	47	94	152	+ 0.005	1.9
63	20	80	420.0008.322	52	49	54	112	+ 0.007	1.4
63	20	120	420.0038.322	52	49	94	152	+ 0.007	2.0
63	25	110	420.0009.322	65	54	84	142	+ 0.007	2.3
63	32	110	420.0010.322	72	58	84	142	+ 0.007	2.5
80	6	80	420.0001.323	25	35	54	120	+ 0.005	1.5
80	8	80	420.0002.323	28	35	54	120	+ 0.005	1.5
80	10	80	420.0003.323	35	39	54	120	+ 0.005	1.7
80	12	80	420.0004.323	42	44	54	120	+ 0.005	1.8
80	14	80	420.0005.323	44	44	54	120	+ 0.005	1.9
80	16	100	420.0006.323	48	47	74	140	+ 0.005	2.1
80	18	100	420.0007.323	50	47	74	140	+ 0.005	2.3
80	20	100	420.0008.323	52	49	74	140	+ 0.007	2.4
80	25	100	420.0009.323	65	54	74	140	+ 0.007	2.9
80	32	110	420.0010.323	72	58	84	150	+ 0.007	3.4

TAC Rockford - Tel. 815 962-4500 - info@TACRockford.com - www.TACRockford.com

Reduction Sleeves for Straight Shanks with Lateral Driving Surface (Weldon)

DIN 69 882-4



HSK-A	d1	A	Ref.no.	d2	l1	l2	L	d1 tolerance	kg
100	6	80	420.0001.324	25	35	51	130	+ 0.005	2.0
100	6	160	420.0041.324	25	35	131	210	+ 0.005	2.5
100	8	80	420.0002.324	28	35	51	130	+ 0.005	2.2
100	8	160	420.0042.324	28	35	131	210	+ 0.005	2.6
100	10	80	420.0003.324	35	39	51	130	+ 0.005	2.4
100	10	160	420.0043.324	35	39	131	210	+ 0.005	3.0
100	12	80	420.0004.324	42	44	51	130	+ 0.005	2.5
100	12	160	420.0044.324	42	44	131	210	+ 0.005	3.4
100	14	80	420.0005.324	44	44	51	130	+ 0.005	2.5
100	14	160	420.0045.324	44	44	131	210	+ 0.005	3.5
100	16	100	420.0006.324	48	47	71	150	+ 0.005	2.9
100	16	160	420.0046.324	48	47	131	210	+ 0.005	3.8
100	18	100	420.0007.324	50	47	71	150	+ 0.005	2.9
100	18	160	420.0047.324	50	47	131	210	+ 0.005	4.0
100	20	100	420.0008.324	52	49	71	150	+ 0.007	3.0
100	20	160	420.0048.324	52	49	131	210	+ 0.007	4.1
100	25	100	420.0009.324	65	54	71	150	+ 0.007	3.5
100	25	160	420.0049.324	65	54	131	210	+ 0.007	5.0
100	32	100	420.0010.324	72	58	71	150	+ 0.007	3.7
100	32	160	420.0050.324	72	58	131	210	+ 0.007	5.6
100	40	120	420.0011.324	80	75	191	170	+ 0.007	5.9

For coolant tubes see accessories page 4.8
For clamping screws see accessories page 4.12

Use

For holding shank tools with lateral driving surface,
DIN 1835 type B and DIN 6535 type HB.

Design

Permissible concentricity deviation of hollow taper shank to location hole $d_1 = 0.003$ mm

(measured at 3 x D cantilever length).
Chucks are fine balanced according to ISO 1940-1 G 2.5 at 25,000 min⁻¹.

Standard Specification

Clamping screw included.
From location hole $d_1 = 25$ mm 2 clamping screws are included.

Note

For an increased machining accuracy the bore tolerance is much reduced compared to DIN 1835.
Other designs and sizes are available on request.

TAC Rockford - Tel. 815 962-4500 - info@TACRockford.com - www.TACRockford.com