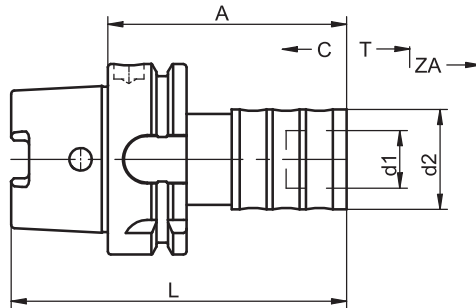


## Quick Change Tapping Chucks



HSK-A	Thread	A	Ref.no.	Thread shaft	d1	d2	L	C	T	ZA	kg
40	M 3 - M14	73	<b>440.0011.320</b>	3.5 - 11	19	36	93	5	8	2.1	0.6
50	M 3 - M14	77	<b>440.0011.321</b>	3.5 - 11	19	36	102	5	8	2.1	0.9
63	M 3 - M14	79	<b>440.0011.322</b>	3.5 - 11	19	36	111	5	8	2.1	1.2
63	M 4.5 - M24	113	<b>440.0012.322</b>	6 - 18	31	53	145	8.5	15	2.8	2.1
80	M 3 - M14	83.5	<b>440.0011.323</b>	3.5 - 11	19	36	123.5	5	8	2.1	2.0
80	M 4.5 - M24	117.5	<b>440.0012.323</b>	6 - 18	31	53	157.5	8.5	15	2.8	2.9
100	M 4.5 - M24	119.5	<b>440.0011.324</b>	6 - 18	31	53	169.5	8.5	15	2.8	4.0

For coolant tubes see accessories page 4.8

For quick change inserts see page 3.12 and page 3.14

### Use

For holding quick change inserts with or without safety clutch.

### Design

Length compensation on compression and tension to compensate the difference between feed and tap pitch. The pressure

point mechanism guarantees that the tap immediately cuts the thread as soon as the permissible axial force is reached. The tension lock protects the tapping chuck against damage as a result of high axial tensile load.

### Note

Quick change tapping chucks with centrally sealed coolant supply available on request (50 bar).

**TAC Rockford - Tel. 815 962-4500 - info@TACRockford.com - www.TACRockford.com**