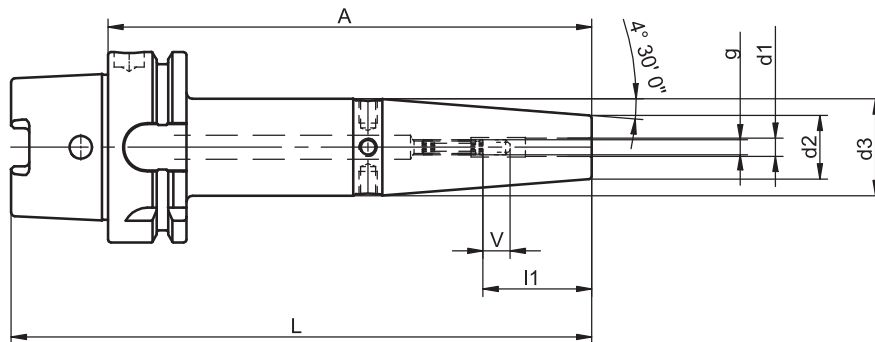


i-tec® Shrink Fit Chucks Inch Version



HSK-A	d1	A	Ref.no.	d2	d3	l1	g	L	V	kg
63	0.313	3.13	311.0604.322	0.827	1.158	1.417	-	4.39	-	0.8
63	0.313	5.00	311.0624.322	0.827	1.260	1.417	M 6	6.26	0.394	1.1
63	0.375	3.13	311.0605.322	0.945	1.276	1.654	-	4.39	-	0.9
63	0.375	5.00	311.0625.322	0.945	1.339	1.654	M 8 x 1	6.26	0.394	1.2
63	0.438	3.13	311.0606.322	0.945	1.276	1.850	-	4.39	-	0.9
63	0.438	5.00	311.0626.322	0.945	1.339	1.850	M10 x 1	6.26	0.394	1.2
63	0.500	3.13	311.0607.322	0.945	1.276	1.850	-	4.39	-	0.9
63	0.500	5.00	311.0627.322	0.945	1.339	1.850	M10 x 1	6.26	0.394	1.2
63	0.563	3.38	311.0608.322	1.063	1.433	1.850	-	4.64	-	0.9
63	0.563	5.00	311.0628.322	1.063	1.339	1.850	M10 x 1	6.26	0.294	1.2
63	0.625	3.38	311.0609.322	1.063	1.433	1.969	-	4.64	-	0.9
63	0.625	5.00	311.0629.322	1.063	1.417	1.969	M12 x 1	6.26	0.394	1.2
63	0.750	3.38	311.0610.322	1.299	1.669	1.969	-	4.64	-	1.0
63	0.750	5.00	311.0630.322	1.299	1.732	1.969	M12 x 1	6.26	0.394	1.5
63	1.000	3.38	311.0612.322	1.732	2.087	2.283	-	4.64	-	1.3
63	1.000	5.00	311.0632.322	1.732	2.087	2.283	M16 x 1	6.26	0.394	1.9
63	1.250	3.38	311.0613.322	1.732	2.087	2.402	-	4.64	-	1.1
63	1.250	5.00	311.0633.322	1.732	2.087	2.402	M16 x 1	6.26	0.394	1.8

For coolant tubes see accessories page 4.8

For adjusting screws see accessories page 4.8

Design

Permissible concentricity deviation of hollow taper shank to location hole $d_1 = 0.003$ mm (measured at $3 \times D$ cantilever length).

Chucks are fine balanced according to ISO 1940-1 G 6.3 at $10,000 \text{ min}^{-1}$.

The clamping diameter is designed for a shank tolerance of h6.

Standard Specification

Adjusting screw for length adjustment is not included.

Note

Metrical adjusting screws (only for $A=5.00$).

All dimensions, unless otherwise indicated, in inch.

Other designs and sizes are available on request.

TAC Rockford - Tel. 815 962-4500 - info@TACRockford.com - www.TACRockford.com