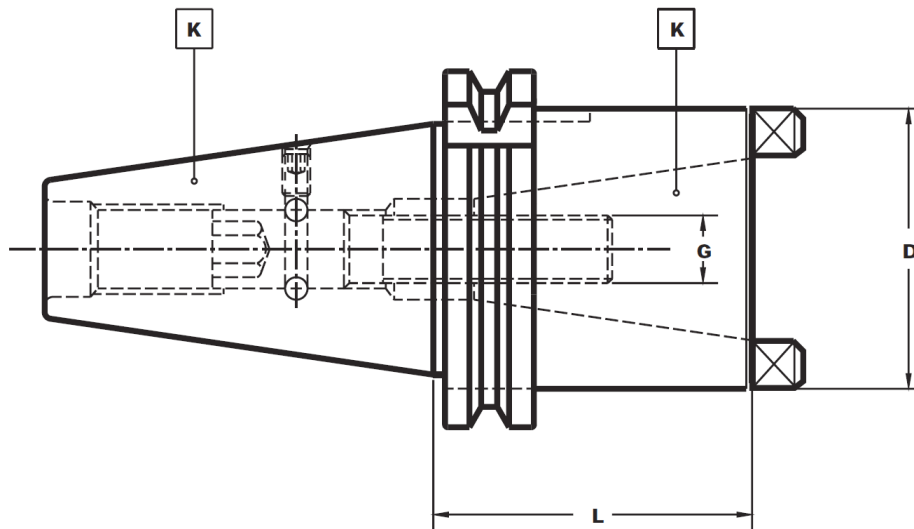


# Laip Steep Taper to Steep Taper (MAS 403 BT) Reducing Adapter 681.003.1332.02

With double effect pull stud – for tools with DIN 69871 or MAS 403 BT tapers

Rev. 12-1101 Page 1 of 1  
Uncontrolled Document



- Maximum circular deviation between and K and K1  $\leq 0.008$

Steep Taper (K)	MAS 403 BT Taper (K1)	D	G	Length (L)	Part Number
Steep Taper 40	Steep Taper (BT) 30	50	M-12	58	<a href="#">681.0031332020102</a>
Steep Taper 40	Steep Taper (BT) 40	68	M-16	85	<a href="#">681.0031332020202</a>
Steep Taper 50	Steep Taper (BT) 30	55	M-12	53	<a href="#">681.0031332040102</a>
Steep Taper 50	Steep Taper (BT) 40	63	M-16	63	<a href="#">681.0031332040202</a>

Clamping cartridge not included – available on request.

## TAC Rockford Product Line

Machine Tool Gauges, Tool Changer Alignment, Runout Test Arbors, Workholding Systems, Tool Holders, Adapters and Extensions, Tool Holder Blanks, Machine Tool Accessories, Coolant Tubes and Gauges, Heat Shrink Systems, Rapid Prototyping

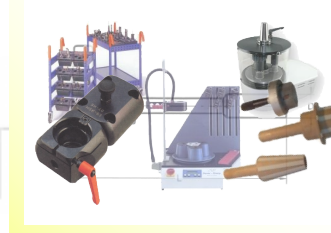
### Tool Holders



### Gauges



### Accessories



### Rapid Prototyping

