



Hollow Taper Shank Type A (601.100)

For use with machining centers, milling machines, special-purpose machines with automatic tool changing. Hollow Taper Shanks for Automatic Tool Changing acc. to ISO 12164/DIN 69 893 Part 1 and 2 with Gripper Groove.



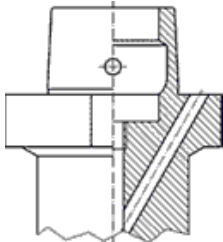
Hollow Taper Shank Type B (601.200)

For use with machining centers, milling machines for heavy-duty machining, lathes. Hollow Taper Shanks for Automatic Tool Changing acc. to ISO 12164/DIN 69 893 Part 1 and 2 with Gripper Groove.



Hollow Taper Shank Type C (601.300)

Preferably for use with spindles in transfer lines and special-purpose machines without automatic tool changing, stub spindles, extensions or reducers. Hollow Taper Shanks for Manual Tool Changing acc...



Hollow Taper Shank Type D (601.400)

For use in all areas which require even better support with manual tool changing via a large contact face. Hollow Taper Shanks for Manual Tool Changing acc. to ISO 12164/DIN 69 893 Part 1 and 2 without Gripper Groove.



Hollow Taper Shank Type E (601.500)

For use with high-frequency spindles and wood working machines. Hollow Taper Shanks for High-Speed Cutting (HSC) acc. to the Pre-Standard DIN 69 893 Part 5 and 6 with Gripper Groove.



Hollow Taper Shank Type F (601.600)

With enlarged flange diameter. Hollow Taper Shanks for High-Speed Cutting (HSC) acc. to the Pre-Standard DIN 69 893 Part 5 and 6 with Gripper Groove.