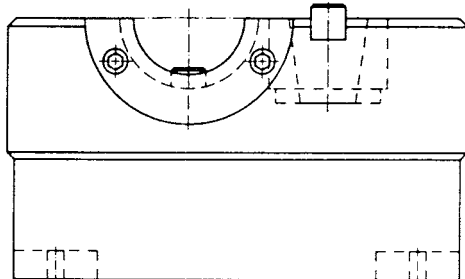


***Safely work on tool holders!***



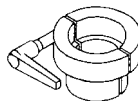
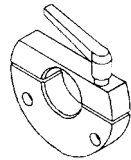
**Clamp style unit for horizontal and vertical use**  
*Includes clamping flange and clamping sleeve*

Taper	Order Number
HSK 25	540.210.125
HSK 32	540.210.132
HSK 40	540.210.140
HSK 50	540.210.150
HSK 63	540.210.163
HSK 80	540.210.180
HSK 100	540.210.190



**Nest style unit for horizontal and vertical use**  
*Includes nest flange and nest sleeve*

Taper	Order Number
HSK 25	540.220.125
HSK 32	540.220.132
HSK 40	540.220.140
HSK 50	540.220.150
HSK 63	540.220.163
HSK 80	540.220.180
HSK 100	540.220.190



**Accessories**

Taper	Clamping Flange	Clamping Sleeve	Nest Flange	Nest Sleeve
HSK 25	540.211.125	540.221.125	540.212.125	540.223.125
HSK 32	540.211.132	540.221.132	540.212.132	540.223.132
HSK 40	540.211.140	540.221.140	540.212.140	540.223.140
HSK 50	540.211.150	540.221.150	540.212.150	540.223.150
HSK 63	540.211.163	540.221.163	540.212.163	540.223.163
HSK 80	540.211.180	540.221.180	540.212.180	540.223.180
HSK 100	540.211.190	540.221.190	540.212.190	540.223.190

*Clamping flanges or sleeves can be used with nest or clamp style bases.*

- Strike Plate 540.222.000
- Empty Base 540.229.000

**Other configurations and clamping fixtures for standard taper tools are also available — call for more information.**