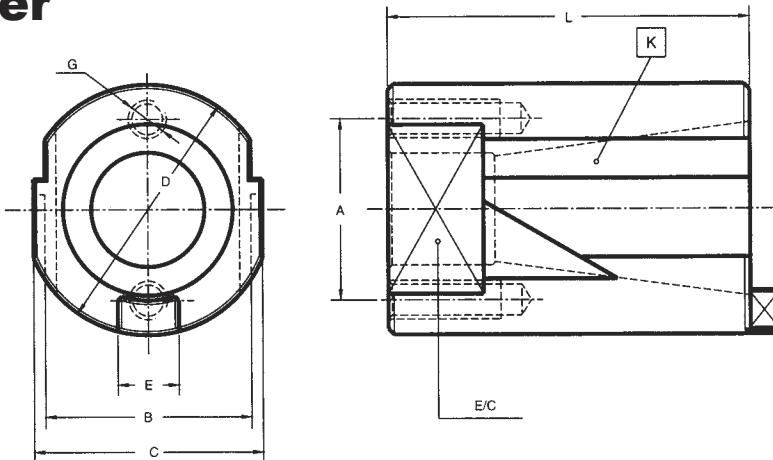


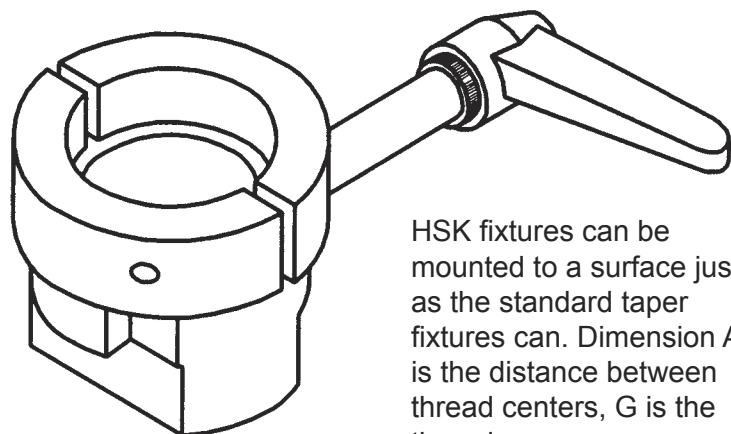
# Basic Mounting Fixture for Standard and HSK Taper

The Basic Mounting Fixture is a simple yet effective way to work with your toolholders. The fixture is designed for mounting or simply holding in a vise. Additionally, in conjunction with a surface plate and height gage, the mounting fixture can be used as an inexpensive alternative to a presetter.



| Taper | E/C | A  | G   | B  | C  | D   | L   | E     | Weight  | Order Number |
|-------|-----|----|-----|----|----|-----|-----|-------|---------|--------------|
| #30   | 30  | 36 | M8  | 38 | 47 | 52  | 74  | 15.88 | 0.73 kg | 540.110.830  |
| #40   | 48  | 47 | M10 | 54 | 60 | 65  | 97  | 15.88 | 1.60 kg | 540.110.840  |
| #45   | 50  | 60 | M10 | 60 | 75 | 85  | 110 | 19.05 | 4.49 kg | 540.110.845  |
| #50   | 75  | 75 | M10 | 85 | 95 | 100 | 130 | 25.40 | 5.23 kg | 540.110.850  |

Dimensions in mm



HSK fixtures can be mounted to a surface just as the standard taper fixtures can. Dimension A is the distance between thread centers, G is the thread.

| Taper   | A   | G   | Order Number |
|---------|-----|-----|--------------|
| HSK 25  | 32  | M6  | 540.110.125  |
| HSK 32  | 42  | M8  | 540.110.132  |
| HSK 40  | 49  | M8  | 540.110.140  |
| HSK 50  | 57  | M8  | 540.110.150  |
| HSK 63  | 66  | M10 | 540.110.163  |
| HSK 80  | 83  | M10 | 540.110.180  |
| HSK 100 | 100 | M10 | 540.110.190  |

